

STAINLESS STEEL CONNECTORS (INOX)

Special applications require special solutions. This is important for connectors made of stainless steel, too. They are being used where the conditions of the environment are extremely rough or hygienic requirements particularly high.

// Signal connectors M 16 INOX

// Signal connectors M 23 INOX

// Power connectors M 23 INOX



Product overview

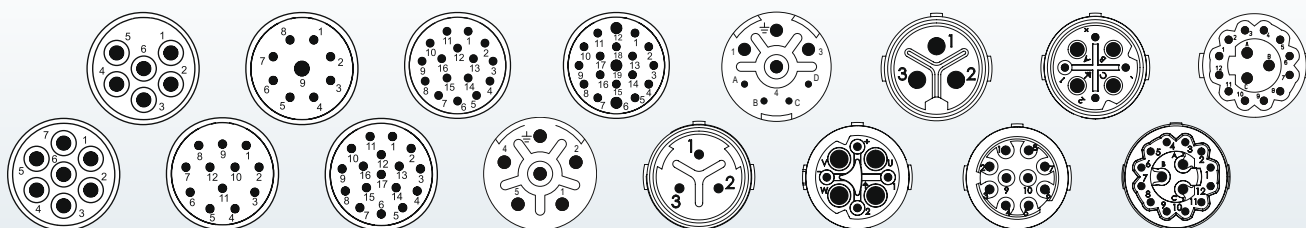
Housings

► 174



Inserts

► 44, 96, 135



Accessories

► 178



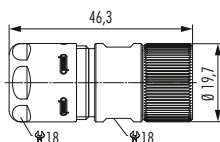
Mechanical Data	Materials and Technical Data
Housing	Stainless Steel V4A 1.4404 (AISI 316 L)
Housing surface	Clear
Inserts (for contacts)	Thermoplastic Polyamid PA 6 (Nylon 6/6), PBT Fire protection class V-0
Contacts	Brass Alloy
Contact surface at point of contact	Nickel and gold plated (0,25 µm)
Minimum mating cycles	> 1000
Seals / O-Rings	Viton® (FPM / FKM), alternativ EPDM
Temperature range	-40 °C – 125 °C
Type of contacts signal M 23	Crimp, solder, dip-solder (PCB)
Type of contacts power M 23	Crimp
Type of contacts M 16	Crimp, dip-solder (PCB)
Protection	IP 67 / IP 69K per EN 60 529 (connected), NEMA 4x

Additional Information			
Electrical data see standard program		Inserts and contacts see standard program	
Connectors M 12 Power	page 21	Connectors M 12 Power	page 25
Connectors M 16	page 39	Connectors M 16	page 44
Signal Connectors M 23	page 87	Signal Connectors M 23	page 96
Power Connectors M 23	page 129	Power Connectors M 23	page 135



Housings M 16

Straight Connector, Female Thread



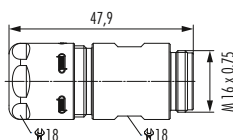
Cable-Ø

Part Number

3 – 6 mm (.12" – .24")	7.814.300.000
5 – 9 mm (.20" – .35")	7.814.400.000
8 – 11 mm (.31" – .43")	7.814.500.000



Straight Connector, Male Thread



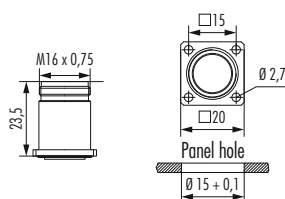
Cable-Ø

Part Number

3 – 6 mm (.12" – .24")	7.824.300.000
5 – 9 mm (.20" – .35")	7.824.400.000
8 – 11 mm (.31" – .43")	7.824.500.000



Panel Connector, Male Thread



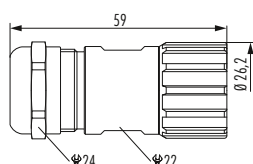
Type

Part Number

4 x holes Ø 2,7 mm (.11")	7.840.400.000
Flange 20 x 20 mm	



Straight Connector, Female Thread

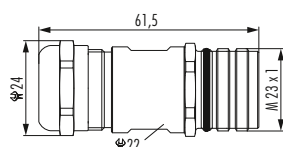


Cable-Ø	Part Number	Part Number EMC
3 – 7 mm (.12 – .28")	7.140.300.000	7.141.300.000
5 – 10 mm (.20 – .39")	7.140.400.000	7.141.400.000
7 – 12 mm (.27 – .47")	7.140.500.000	7.141.500.000
10 – 14 mm (.39 – .55")	7.140.600.000	7.141.600.000

Assembly tool 7.010.900.127 is required



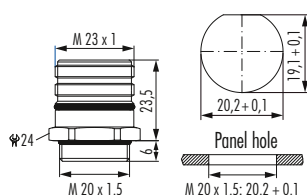
Straight Connector, Male Thread



Cable-Ø	Part Number	Part Number EMC
3 – 7 mm (.12 – .28")	7.240.300.000	7.241.300.000
5 – 10 mm (.20 – .39")	7.240.400.000	7.241.400.000
7 – 12 mm (.27 – .47")	7.240.500.000	7.241.500.000
10 – 14 mm (.39 – .55")	7.240.600.000	7.241.600.000



Panel Connector, Male Thread, Single Hole Mounted

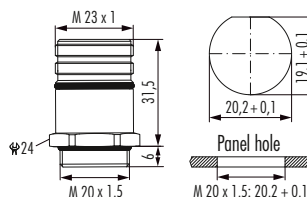


Type	Part Number
Front mounting for male inserts	
Thread M 20 x 1,5	7.420.400.000

*** FOR MALE *
INSERTS ONLY**



Panel Connector, Male Thread, Single Hole Mounted



Type	Part Number
Front mounting for female inserts	
Thread M 20 x 1,5	7.421.400.000

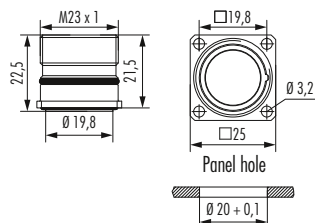
*** FOR FEMALE *
INSERTS ONLY**



Housing without inserts and contacts

Housings M 23 Signal / Power

Panel Connector, Male Thread



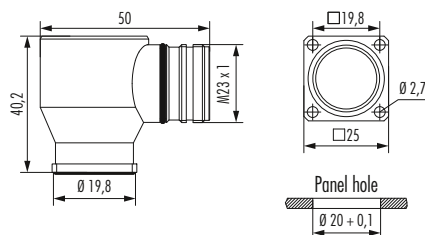
Type

Part Number

With anti-vibration O-Ring
4 holes Ø 3,2 mm (.13").....7.410.400.000



Right Angle Panel Connector, Male Thread



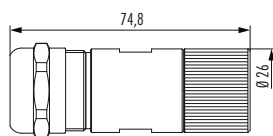
Type

Part Number

4 holes Ø 2,7 mm (.11").....7.430.400.000



Straight Connector, Female Thread



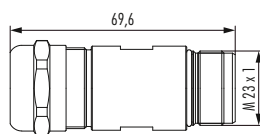
Type

Part Number

7 – 12 mm (.27 – .47").....7.554.500.000
11 – 17 mm (.43 – .67").....7.554.600.000



Straight Connector, Male Thread



Type

Part Number

7 – 12 mm (.27 – .47").....7.564.500.000
11 – 17 mm (.43 – .67").....7.564.600.000

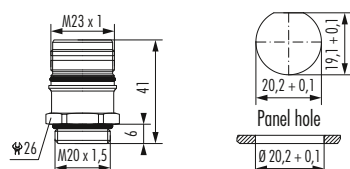


Housing without inserts and contacts

Panel Connector, Male Thread, Single Hole Mounted

Type Part Number

Front mounting
Thread M 20 x1,57.621.400.000

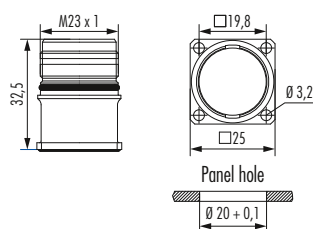


Panel Connector, Male Thread

Type Part Number

For front mounting
4 holes \varnothing 3,2 mm (.13")7.601.400.000

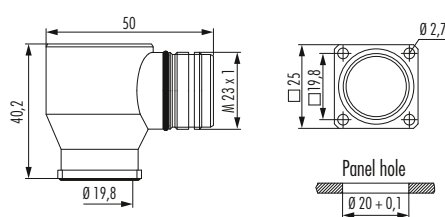
Optional: Flat gasket



Right Angle Panel Connector, Male Thread

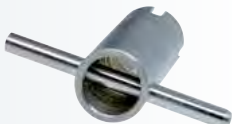






Type Part Number

4 holes \varnothing 2,7 mm (.11")7.630.400.000



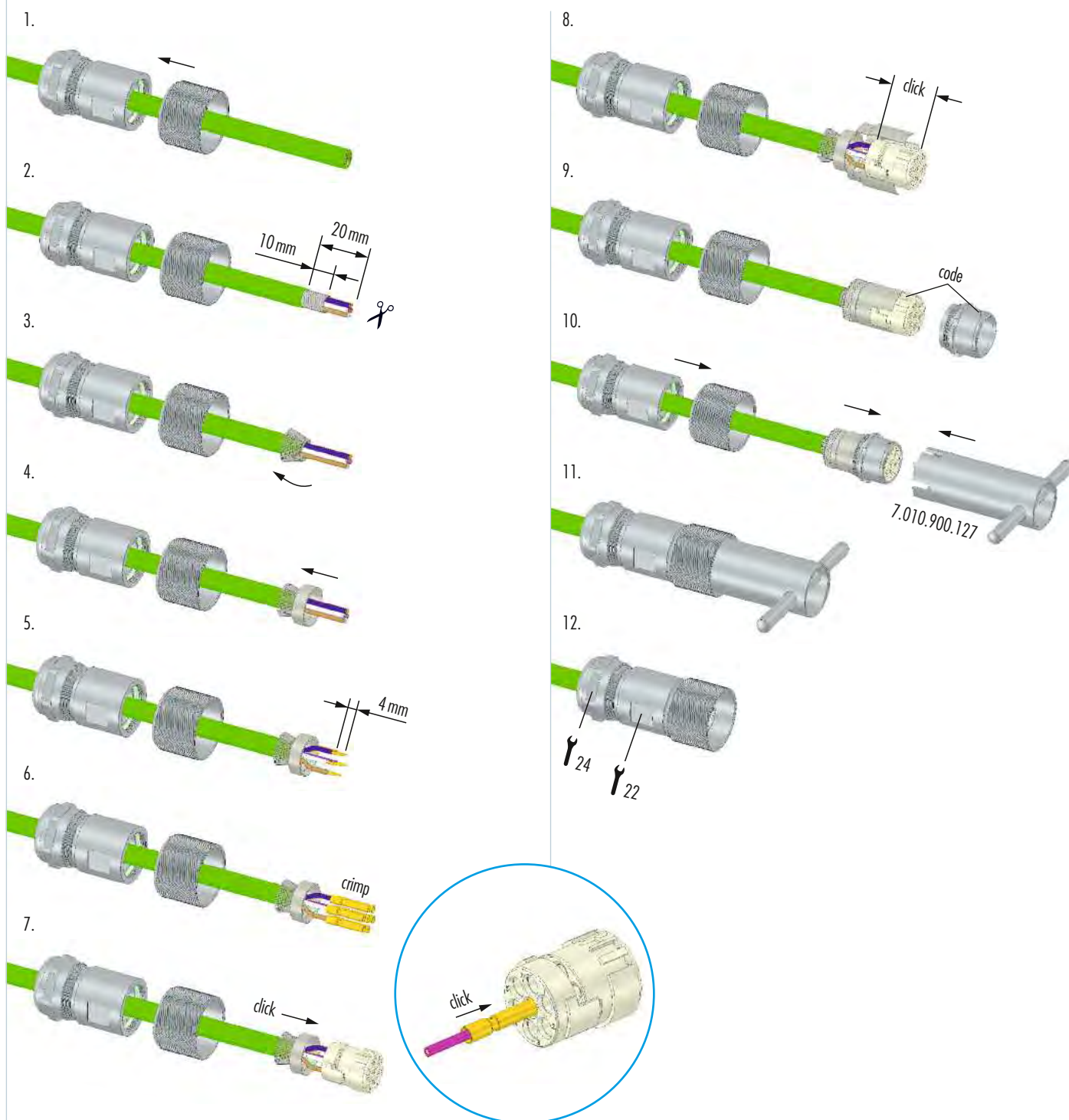


Accessories

Accessories	Type	Part Number
	Assembly tool	7.010.900.127
	Plastic protective cap	
	for connectors M 16 with male thread	7.000.980.161
	for connectors M 16 with female thread	7.000.980.162
	for connectors M 23 with male thread	7.000.900.101
	for connectors M 23 with female thread	7.000.900.102
	Stainless steel protective cap for M 16 Signal	
	for connectors with female thread	7.010.904.163
	for connectors with male thread	7.010.904.162
	with rope for connectors with female thread, Length 70 mm	7.010.9S4.163
	with rope for connectors with male thread, Length 70 mm	7.010.9S4.162
	Stainless steel protective cap for M 23 Signal	
	for connectors with female thread	7.010.904.103
	with rope for connectors with female thread, Length 100 mm	7.010.9S4.103
	Stainless steel protective cap for M 23 Power	
	for connectors with female thread	7.010.904.183
	with rope for connectors with female thread, Length 100 mm	7.010.9S4.183
	Stainless steel protective cap	
	for connectors with male thread	7.010.904.102
	with rope for connectors with male thread	
	Length 100 mm	7.010.9S4.102



Straight Signal Connector, Female Thread



Assembly Instructions

Straight Connector, Male Thread

