

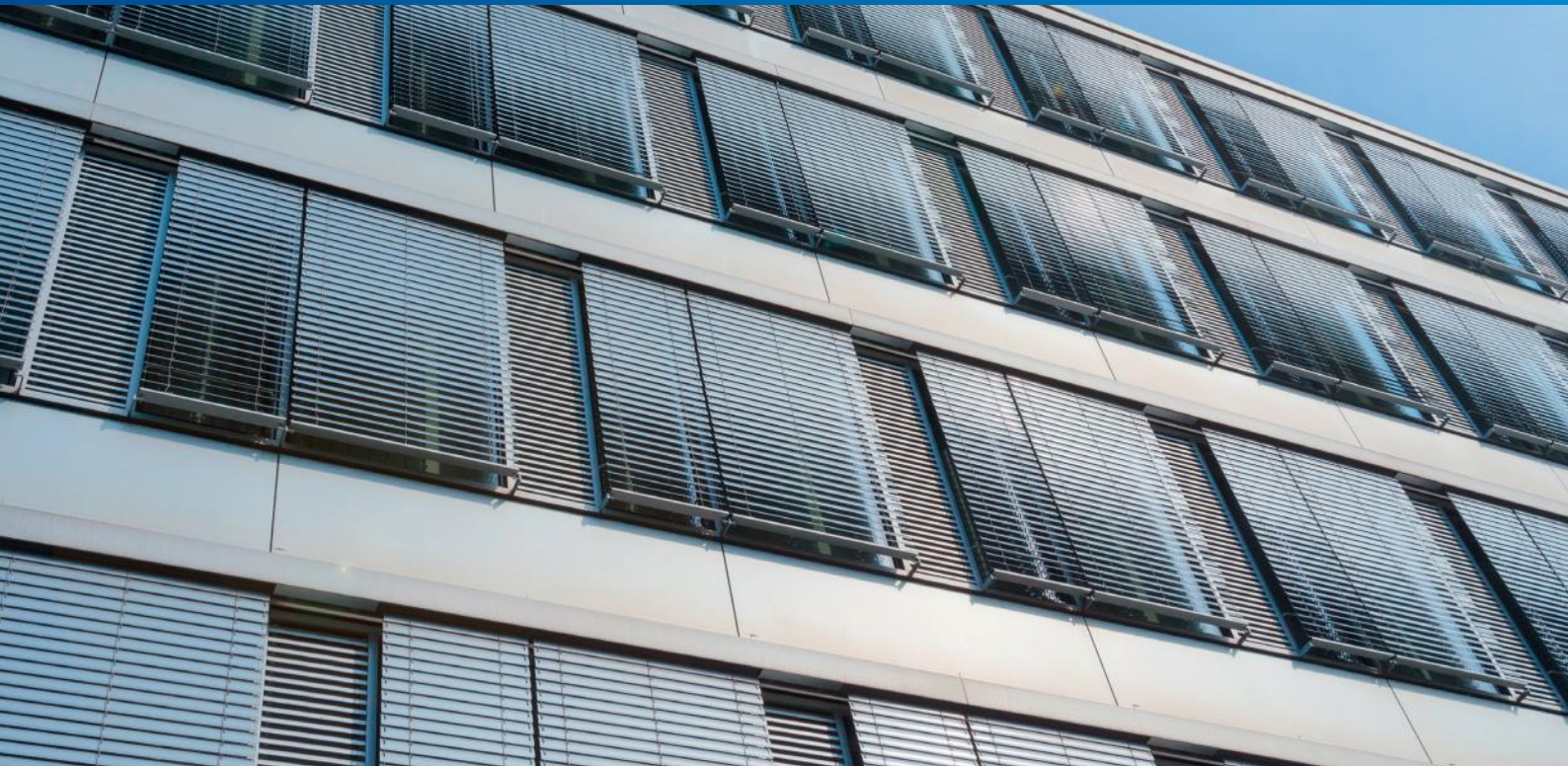


HIRSCHMANN

A **BELDEN** BRAND



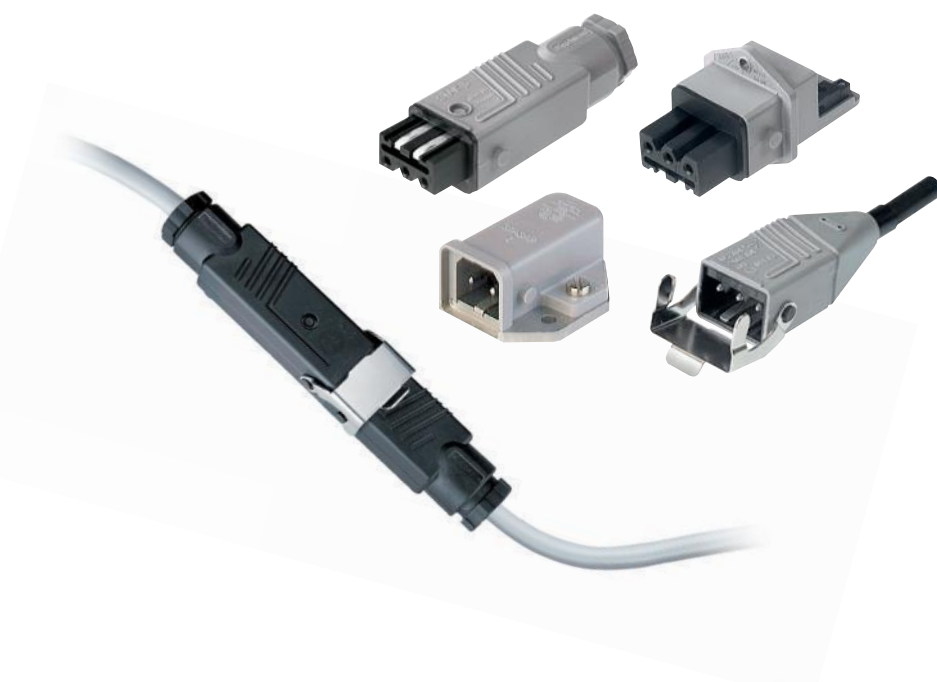
ST Series



Rectangular Connectors ST Series

Rely on the original – market leading for decades

Conforming to IEC 60335, the latest standards for household appliances, the ST Series sets the standard in building automation applications. This makes it an ideal first choice for sun shades and roller blind systems.



The Benefits

Prepared for any weather – especially designed to withstand the challenges of outdoor usages, e.g. rain, ozone and UV radiation






Easy to connect – low installation efforts lead to more ease of use and an efficient work flow

Easy to rely on – ideally suited for ruggedized, moving applications where vibrations and dust are commonplace

Markets

- Building automation
- Machine building
- Automation

Technical Information

ST Series	3-pole (2 + PE)	4-pole (3 + PE)	5-pole (4 + PE)	6-pole (5 + PE)
				
 General Data				
No. of Pins	2 + PE	3 + PE	4 + PE	5 + PE
Cable-Gland (field attachable)	PG 7	PG 11	Male: M16x1.5 Female: PG 11	PG 11
Cable-Range (field attachable)	ø 4.0 mm to 6.5 mm	ø 6.0 mm to 10.0 mm	ø 6.0 mm to 10.0 mm	ø 8.0 mm to 10.0 mm
Terminal Type (field attachable)	Screw	Screw	Screw	Crimp
Conductor Size (field attachable)	max. 1.5 mm ²	max. 1.5 mm ²	max. 1.5 mm ²	max. 1.0 mm ²
Cable Material (molded)	H05RR	H05RR	H05RR	–
Conductor Size (molded)	0.75 mm ²	0.75 mm ²	0.75 mm ²	–
Housing Color	Grey, Black	Grey, Black	Grey, Black	Grey, Black
 Electrical Data				
Operating Voltage	230 V AC/DC	400 V AC/230 V DC	400 V AC/230 V DC	400 V AC/230 V DC
Current	Moulded cable connectors: 10A AC/DC Wireable cable & Panel Connectors: 16A AC/6A DC	Moulded cable connectors: 10A AC/DC Wireable cable & Panel Connectors: 16A AC/10A DC	10 A AC/10 A DC	10 A DC/6 A AC
 Environmental Data				
Ambient Temperature*	-30 °C to +90 °C	-30 °C to +90 °C	-30 °C to +90 °C	-30 °C to +90 °C
Protection Degree	IP54	IP54	IP54	IP54
Approvals	Moulded cable connectors: VDE Wireable cable & panel connectors: VDE, UL, SEV	Moulded cable connectors: VDE Wireable cable & panel connectors: VDE, UL	Moulded cable connectors: VDE Wireable cable Connectors: VDE, UL, SEV	VDE, SEV

* Notice derating and cable temperature





Product Configurator

Cable Connectors with Moulded Cable

S T A K **3** **K** **0 7 5** **S I** **2 M** **G R E Y**

Gender & Design

STAS = Male connector
STAK = Female connector

Pin Assignment

2 = 3-pole (2 + PE)
3 = 4-pole (3 + PE)
4 = 5-pole (4 + PE)

Assembly Design Indicator

K = Moulded

Conductor Size

075 = 0.75 mm²

Safety Clamp (available for STAS)

☐ = Without safety bracket
SI = With safety bracket

Flammability Class

☐ = UL 94 HB
V0 = UL 94-V0

Cable Length

2M = 2 meter
5M = 5 meter
10M = 10 meter

Other cable lengths available upon request.

Housing Color

GREY = Grey housing
BLACK = Black housing

Wireable Cable and Panel Connectors

S T A S **3 N** **G R E Y**

Gender & Design

STAS = Male cable connector
STASEI = Male panel connector
STASAP = Male angled panel connector
STAK = Female cable connector
STAKEI = Female panel connector
STAKAP = Female angled panel connector

Pin Assignment & Additional Features

2 = 3-pole (2 + PE) without internal strain relief
20 = 3-pole (2 + PE), with internal strain relief
200 = 3-pole (2 + PE), with internal strain relief & alternative coding
3 N = 4-pole (3 + PE) with internal strain relief
4 N = 5-pole (4 + PE) with internal strain relief
5 = 6-pole (5 + PE) with internal strain relief

Flammability Class

☐ = UL 94 HB
V0 = UL 94-V0

Housing Color

GREY = Grey housing
BLACK = Black housing

Order Overview

See below for grey UL94 HB shell order numbers.

Black shells and UL94 V0 shells available on request. Please liaise with technical support for guidance.

ST Series	3-pole (2 + PE)		4-pole (3 + PE)	
	Male	Female	Male	Female
	<div>1. Choose Coding →</div> <div>↓ 2. Choose Design</div>		<div>1. Choose Coding →</div> <div>↓ 2. Choose Design</div>	
Wireable Cable Connectors				
Without internal strain relief	930620106 (STAS 2 Grey)	930621106 (STAK 2 Grey)	–	–
With internal strain relief	931265106 (STAS 20 Grey)	931264106 (STAK 20 Grey)	932143106 (STAS 3 N Grey)	932140106 (STAK 3 N Grey)
With internal strain relief & alternative coding	932038106 (STAS 200 Grey)	932037106 (STAK 200 Grey)	–	–
Wireable Panel Connectors				
Angled with screw termination	930822106 (STASAP 2 B Grey)	930329106 (STAKAP 2 Grey)	932514106 (STASAP 3N Grey)	932513106 (STAKAP 3N Grey)
Angled with screw termination & alternative coding	932046106 (STASAP 200 Grey)	932045106 (STAKAP 200 Grey)	–	–
Angled with crimp contacts	–	–	–	–
Straight with screw termination	930622106 (STASEI 2 Grey)	930647106 (STAKEI 2 Grey)	932145106 (STASEI 3 N Grey)	932142106 (STAKEI 3 N Grey)
Straight with screw termination & alternative coding	932048106 (STASEI 200 Grey)	932047106 (STAKEI 200 Grey)	–	–
Straight with crimp termination	–	–	–	–
Accessories				
Safety bracket	732044000 (STASI 2)		733045001 (STASI 3)	

ST Series	5-pole (4 + PE)		6-pole (5 + PE)	
	Male	Female	Male	Female
	<div>1. Choose Coding →</div> <div>↓ 2. Choose Design</div>		<div>1. Choose Coding →</div> <div>↓ 2. Choose Design</div>	
Wireable Cable Connectors				
Without internal strain relief	–	–	–	–
With internal strain relief	934442106 (STAS 4 N Grey)	932533106 (STAK 4 N Grey)	931692106 (STAS 5 Grey)	931691106 (STAK 5 Grey)
With internal strain relief & alternative coding	–	–	–	–
Wireable Panel Connectors				
Angled with screw termination	–	–	–	–
Angled with screw termination & alternative coding	–	–	–	–
Angled with crimp contacts	–	–	932512106 (STASAP 5 Grey)	932511106 (STAKAP 5 Grey)
Straight with screw termination	–	–	–	–
Straight with screw termination & alternative coding	–	–	–	–
Straight with crimp termination	–	–	931697106 (STASEI 5 Grey)	931694106 (STAKEI 5 Grey)
Accessories				
Safety bracket	733449001 (STASI 4)		733045001 (STASI 3)	