



**HIRSCHMANN**

A **BELDEN** BRAND



CA Series



# Circular Connectors CA Series

Reliable Power Transmission – where you need it,  
when you need it

Combining the advantages of a lightweight plastic housing with the mechanical robustness of an industrial connector, the CA Series represents a reliable solution for the most demanding applications.



## The Benefits

**Ruggedized for performance** – well-proven power supply for wet, dusty and harsh surroundings



**Intuitive to handle** – thanks to user-friendly termination and assembly in a jiffy

**Versatile to use** – technologically convincing connectivity solution for a wide range of applications

## Markets

- Machine building
- Measurement and control
- Automation
- Logistics
- Infrastructure
- Material handling

## Technical Information

CA Series	4-pole (3 + PE)	7-pole (6 + PE)
		
 <b>General Data</b>		
No. of Pins	3 + PE	6 + PE
Cable-Gland (field attachable)	TR 22	TR 22
Cable-Range (field attachable)	ø 6 mm to 12 mm	ø 6 mm to 12 mm
Terminal Type (field attachable)	Screw	Solder
Conductor Size (field attachable)	0.5 mm <sup>2</sup> to 2.5 mm <sup>2</sup>	max. 0.75 mm <sup>2</sup>
Cable Material (molded)	–	–
Conductor Size (molded)	–	–
Housing/Contact Holder Color	Black	Black
 <b>Electrical Data</b>		
Operating Voltage	400 V AC/230 V DC	230 V AC/DC
Current	16 A AC/10 A DC	10 A AC/DC
 <b>Environmental Data</b>		
Ambient Temperature*	-40 °C to +90 °C	-40 °C to +90 °C
Protection Degree	IP65, IP67	IP65, IP67
Approvals	UL, VDE, CSA	UL, VDE, CSA

\* Notice derating and cable temperature



## Product Configurator

### Field Attachables and Receptacles

#### Series Indicator

**CA** = CA Series

#### Pin Assignment

**3** = 4-pole (3 + PE)  
**6** = 7-pole (6 + PE)

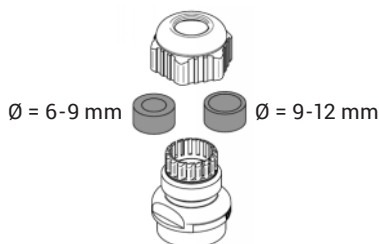
#### Geometry Design

☐ = Straight  
**W** = 90° angled

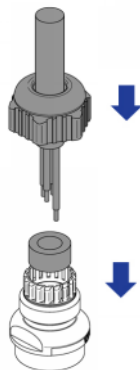
#### Gender & Design

**LS** = Male connector, field attachable  
**LD** = Female connector, field attachable  
**GS** = Male connector, receptacle with flange  
**GD** = Female connector, receptacle with flange

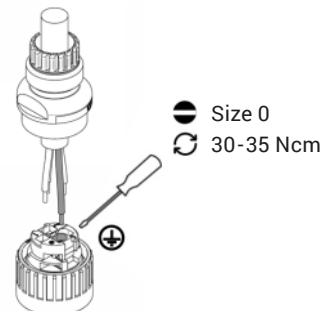
## CA Series – intuitive assembly in a jiffy



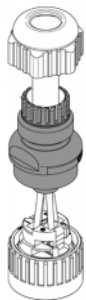
Pick the right sealing depending on your cable size.



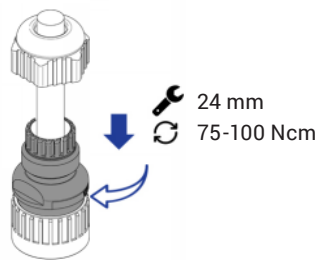
Insert the sealing into the body, then push the cable through.



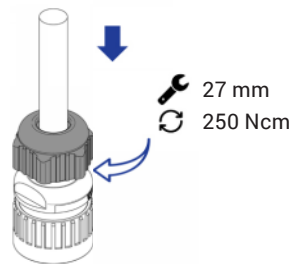
Unscrew the PE-contact, insert the PE-conductor and tighten again.



Repeat this procedure for the remaining contacts.



Screw the connector body to the contact holder.



Screw the cable gland to the connector body.



## Order Overview

CA Series	4-pole (3 + PE)		7-pole (6 + PE)	
	Male	Female	Male	Female
<b>1. Choose Coding</b> → <b>2. Choose Design</b> ↓				
<b>Field Attachables</b>	Description / Order No.	Description / Order No.	Description / Order No.	Description / Order No.
Straight, screw type	CA 3 LS / 934 124-100	CA 3 LD / 934 125-100	–	–
Straight, solder type	–	–	CA 6 LS / 934 126-100	CA 6 LD / 934 127-100
Angled, screw type	CA 3 WL S / 934 128-100	CA 3 WL D / 934 129-100	–	–
Angled, solder type	–	–	CA 6 WL S / 934 130-100	CA 6 WL D / 934 128-100
<b>Receptacles</b>				
Screw type	CA 3 GS / 932 322-100	CA 3 GD / 932 321-100	–	–
Solder type	–	–	CA 6 GS / 932 326-100	CA 6 GD / 932 325-100
<b>Accessories</b>				
Safety cap & fixing cord	CA 00 SD 1 / 831 530-400	CA 00 SD 3 / 831 532-400	CA 00 SD 1 / 831 530-400	CA 00 SD 3 / 831 532-400

Please see page 3 for more information.

