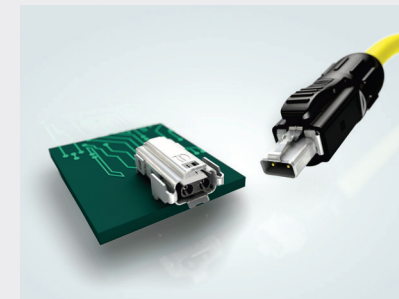


HARTING T1 Industrial.

Small dimensions, great benefits.

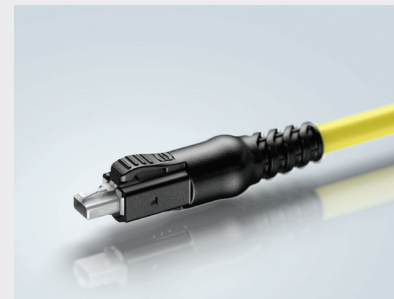
HARTING T1 Industrial is more than just a new connector – and single-pair Ethernet (SPE) is more than just a new cable. The internationally standardised mating face is part of a complete system for TCP/IP-based connection of sensors to Ethernet networks. Conceptually designed for high bandwidths for data rates from 10 Mbit/s to gigabit SPE and demanding industrial environments within Integrated Industry. This means that SPE can offer the necessary infrastructure for the entire IIoT ecosystem.



Miniaturised device sockets and field-attachable connectors



Reflow-compatible device socket with four robust shield contacts



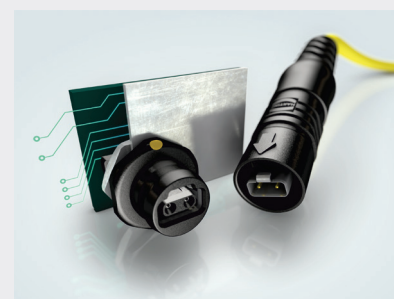
IP20 cable assembly, overmoulded



360° shielding – best EMC performance from cable shield to circuit board



Robust and long-lasting stainless-steel locking mechanism



IP65/67 version with snap-in locking mechanism



Pushing Performance



Pushing Performance

T1 Industrial - SPE connectors and system cables (Single Pair Ethernet)



	T1 Industrial connector	09 45 181 2810 XL
	Single Pair Ethernet	
	2 crimp contacts	
	Crimp contacts AWG 28-26	09 45 500 2810
	Crimp contacts AWG 24-22	09 45 500 2812
	T1 Industrial PCB jack	09 45 281 2810
	Flat mounting, soldered contact pins on PCB	
	Crimping tool	
	T1 Industrial hand crimping tool AWG 28-26	09 45 800 2810
	T1 Industrial hand crimping tool AWG 24-22	09 45 800 2811
	T1 SPE system cable	
	SPE cable, PUR - S/FTP	
	Overmoulded T1 SPE IP20 cable assemblies	
	10/100 Mbit/s - 1/10 Gbit/s	
	2 x AWG 26/7	33 28 020 2001xxx
	2 x AWG 22/7	33 28 020 2002xxx

xxx = Length of cable

005 = 0.5 m | 010 = 1.0 m | 015 = 1.5 m | 020 = 2.0 m | 030 = 3.0 m | 050 = 5.0 m | 075 = 7.5 m | 100 = 10 m | 150 = 15 m | 200 = 20 m

Other lengths available on request (in 10 cm steps)



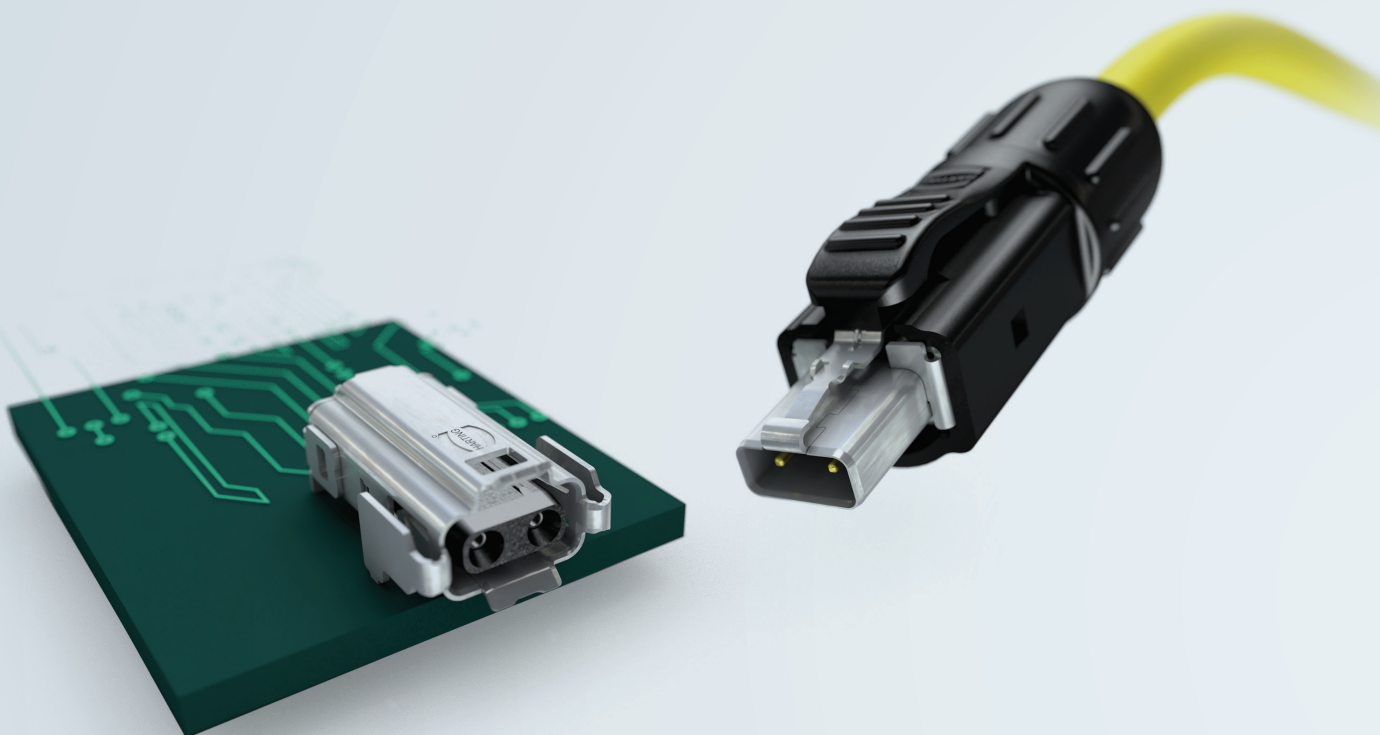
People | Power | Partnership

The standardised interface for single-pair Ethernet
HARTING T1 Industrial

The new small size for single-pair Ethernet connections

HARTING T1 Industrial

Single-pair Ethernet (SPE) is an ideal medium for making the field level “intelligent”, i.e. ensuring the implementation of TCP/IP-based communication right into the sensor/actuator network. This makes Integrated Industry possible, which uses continuous barrier-free communication from the sensor to the cloud.



**MY MISSION:
FUTURE-PROOF
INFRASTRUCTURE FOR
IIOT AT THE
FIELD LEVEL!**

Device technology and sensor technology are getting smaller and smaller. With the new SPE interface – standardised according to IEC 63171-6 (previously IEC61076-3-125) –, HARTING offers a solution to the challenges of miniaturisation. The HARTING T1 Industrial connection technology will be available for IP20 and IP65/67 environments with snap-in technology as well as in M8 and M12 housings with screw or push-pull locking as a socket, connector and cable assembly. This allows all SPE cabling to be implemented – from short connections over a few metres to process automation involving distances of up to 1000 m.

HARTING T1 Industrial

For your applications!

HARTING has set the standard for SPE/T1 connection technology. The first components are now available – as serial parts, of course. Ideal for setting up and measuring test boards or for testing the installation of T1 connectors in your device. For this purpose, HARTING has put together an evaluation kit for you with T1 sockets and a T1 connector, including cables. Secure your own evaluation kit now and see for yourself the benefits of the HARTING T1 Industrial.

Do you have any questions? Would you like support?

Contact us at:

www.HARTING.com/Single-Pair-Ethernet-HARTING-T1-Industrial

or via e-mail to: SPE@HARTING.com

