

Product data sheet

Automation technology - Data transmission



Product description **M8 Male cable connector, Contacts: 4, 4.0-5.5 mm, shieldable, screw clamp, IP67**

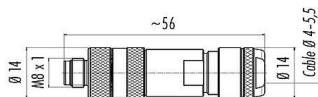
Area **M8-D**

Part no. **99 3369 100 04**

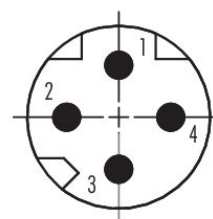
Illustration



Scale drawing



Contact arrangement (Plug-in side)



You can find the component part drawing and assembly instructions on the next page.

Technical data

General features

Part no.	99 3369 100 04
Connector design	Male cable connector
Type standard	DIN EN 61076-2-114
Version	Connector pin straight
Connector locking system	M8x1
Termination	screw clamp
Degree of protection	IP67
Cross-sectional area	0.14-0.50 mm ²
Cable outlet	4.0-5.5 mm
Temperature range from/to	-25 °C / 85 °C
Mechanical operation	> 100 Mating cycles
Weight (g)	27.94
Customs tariff number	85369010
Country of Origin	DE

Electrical parameters

Rated voltage	63 V DC
Rated impulse voltage	1500 V
Rated current	4.0 A
Insulation resistance	> 10 ⁸ Ω
Pollution degree	3
Overvoltage category	II
Insulating material group	II
EMC compliance	shieldable

Product data sheet

Automation technology - Data transmission



Product description	M8 Male cable connector, Contacts: 4, 4.0-5.5 mm, shieldable, screw clamp, IP67
Area	M8-D
Part no.	99 3369 100 04

Shield connection	Iris type spring
-------------------	------------------

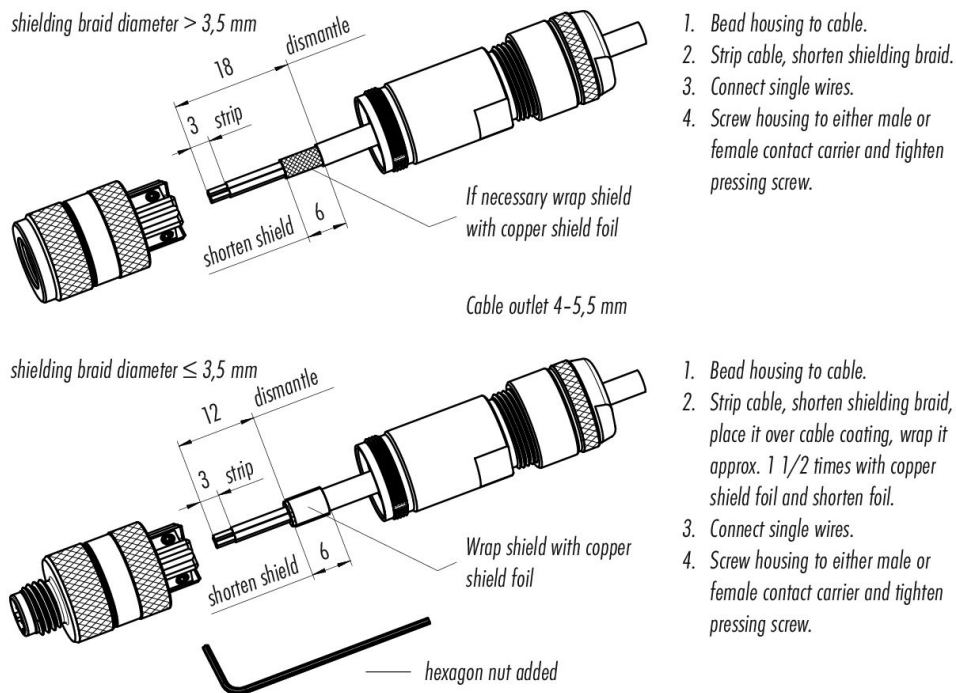
Material

Housing material	CuZn (Brass nickel plated)
Contact body material	PA black
Contact material	CuZn (brass)
Contact plating	Au (gold)
Locking material	CuZn (brass)
REACH SVHC	CAS 7439-92-1 (Lead)
SCIP number	e2144c9f-fb96-402c-b750-592daca032f0

Classifications

eCl@ss 11.1	27-44-01-02
ETIM 9.0	EC002635

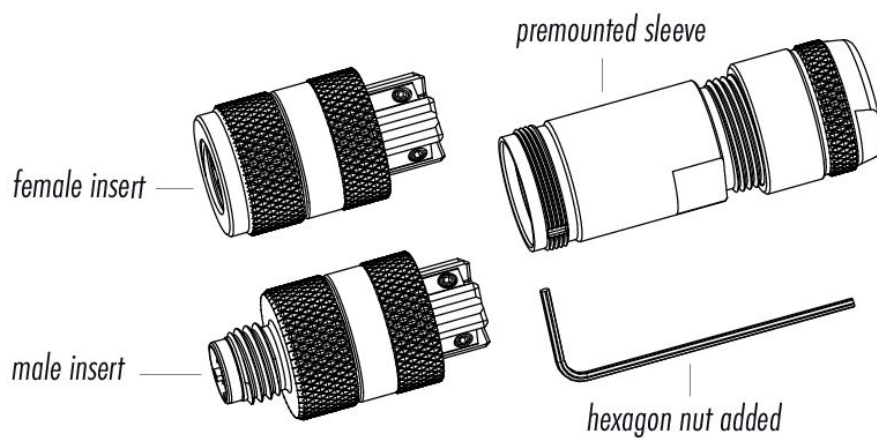
Assembly instructions



Product data sheet
Automation technology - Data transmission

Product description **M8 Male cable connector, Contacts: 4, 4.0-5.5 mm, shieldable, screw clamp, IP67**
Area **M8-D**
Part no. **99 3369 100 04**

Component part drawing



Product description	M8 Male cable connector, Contacts: 4, 4.0-5.5 mm, shieldable, screw clamp, IP67
Area	M8-D
Part no.	99 3369 100 04

Security notices

The connectors have been developed for applications in plant engineering, control and electrical equipment construction. The user is responsible for checking whether the connectors can also be used in other areas of application.

Plug connectors with enclosure protection IP67 and IP68 are not suitable for use under water. When used outdoors, the plug connectors must be protected separately against corrosion. For further information on the IP protection classes, please refer to the "Technical Information" download centre.

To lock the cable connector with the device connector, the threaded ring is tightened "hand-tight" (approx. 40 cNm).

Product data sheet

Automation technology - Data transmission



Product description **M8 Male cable connector, Contacts: 4, 5.0-8.0 mm, shieldable, screw clamp, IP67**

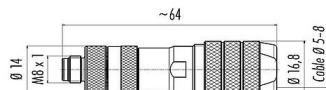
Area **M8-D**

Part no. **99 3369 600 04**

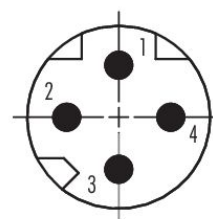
Illustration



Scale drawing



Contact arrangement (Plug-in side)



You can find the component part drawing and assembly instructions on the next page.

Technical data

General features

Part no.	99 3369 600 04
Connector design	Male cable connector
Type standard	DIN EN 61076-2-114
Version	Connector pin straight
Connector locking system	M8x1
Termination	screw clamp
Degree of protection	IP67
Cross-sectional area	0.14-0.50 mm ²
Cable outlet	5.0-8.0 mm
Temperature range from/to	-25 °C / 85 °C
Mechanical operation	> 100 Mating cycles
Weight (g)	34.45
Customs tariff number	85444290
Country of Origin	DE

Electrical parameters

Rated voltage	63 V DC
Rated impulse voltage	1500 V
Rated current	4.0 A
Insulation resistance	> 10 ⁸ Ω
Pollution degree	3
Overvoltage category	II
Insulating material group	II
EMC compliance	shieldable

Product data sheet

Automation technology - Data transmission



Product description	M8 Male cable connector, Contacts: 4, 5.0-8.0 mm, shieldable, screw clamp, IP67
Area	M8-D
Part no.	99 3369 600 04

Shield connection	Iris type spring
-------------------	------------------

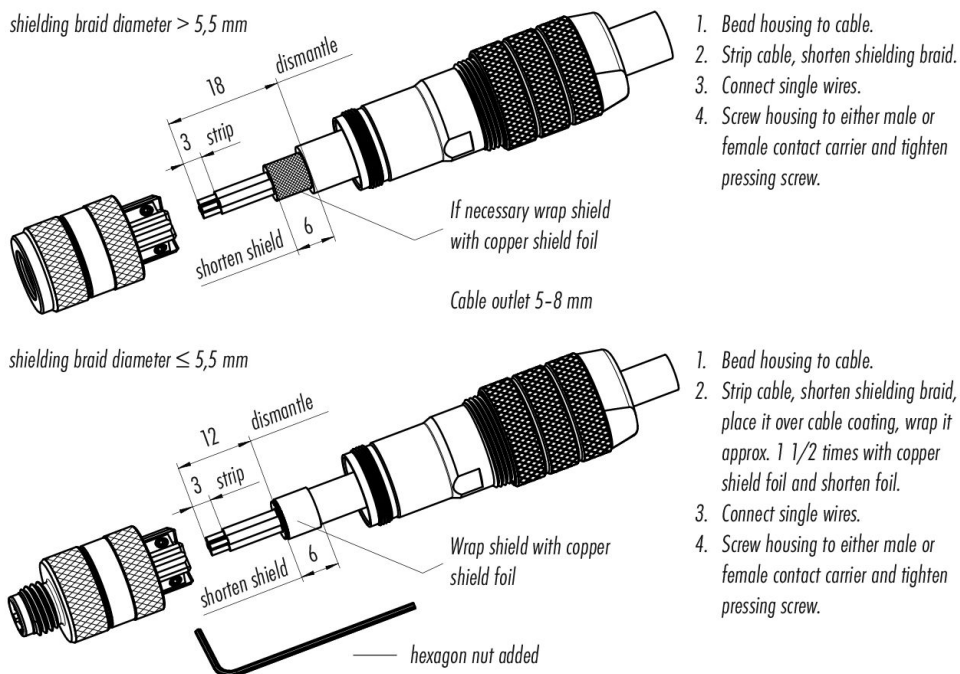
Material

Housing material	CuZn (Brass nickel plated)
Contact body material	PA black
Contact material	CuZn (brass)
Contact plating	Au (gold)
Locking material	CuZn (brass)
REACH SVHC	CAS 7439-92-1 (Lead)
SCIP number	d39684a9-073d-4e37-9636-4f895e983dac

Classifications

eCl@ss 11.1	27-44-01-02
ETIM 9.0	EC002635

Assembly instructions



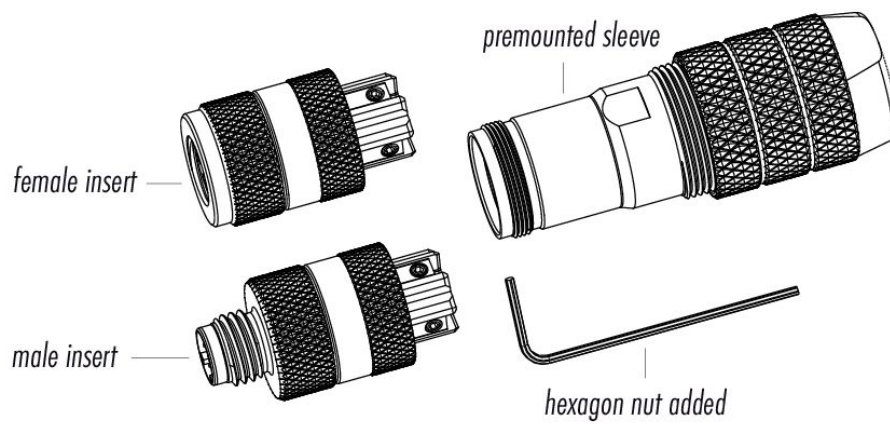
Product data sheet

Automation technology - Data transmission

Product description **M8 Male cable connector, Contacts: 4, 5.0-8.0 mm, shieldable, screw clamp, IP67**

Area **M8-D**
Part no. **99 3369 600 04**

Component part drawing



Product description	M8 Male cable connector, Contacts: 4, 5.0-8.0 mm, shieldable, screw clamp, IP67
Area	M8-D
Part no.	99 3369 600 04

Security notices

The connectors have been developed for applications in plant engineering, control and electrical equipment construction. The user is responsible for checking whether the connectors can also be used in other areas of application.

Plug connectors with enclosure protection IP67 and IP68 are not suitable for use under water. When used outdoors, the plug connectors must be protected separately against corrosion. For further information on the IP protection classes, please refer to the "Technical Information" download centre.

To lock the cable connector with the device connector, the threaded ring is tightened "hand-tight" (approx. 40 cNm).

Product data sheet

Automation technology - Data transmission



Product description **M8 Female cable connector, Contacts: 4, 4.0-5.5 mm, shieldable, screw clamp, IP67, M8x1.0**

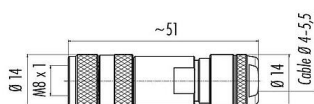
Area **M8-D**

Part no. **99 3368 100 04**

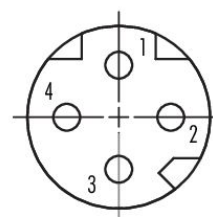
Illustration



Scale drawing



Contact arrangement (Plug-in side)



You can find the component part drawing and assembly instructions on the next page.

Technical data

General features

Part no.	99 3368 100 04
Connector design	Female cable connector
Type standard	DIN EN 61076-2-114
Version	Connector socket straight
Connector locking system	screw
Termination	screw clamp
Degree of protection	IP67
Cross-sectional area	0.14-0.50 mm ²
Cable outlet	4.0-5.5 mm
Temperature range from/to	-25 °C / 85 °C
Mechanical operation	> 100 Mating cycles
Weight (g)	28.22
Customs tariff number	85369010
Country of Origin	DE

Electrical parameters

Rated voltage	63 V
Rated impulse voltage	1500 V
Rated current	4.0 A
Insulation resistance	≥ 10 ⁸ Ω
Pollution degree	3
Overvoltage category	II
Insulating material group	II
EMC compliance	shieldable

Product data sheet

Automation technology - Data transmission



Product description	M8 Female cable connector, Contacts: 4, 4.0-5.5 mm, shieldable, screw clamp, IP67, M8x1.0
Area	M8-D
Part no.	99 3368 100 04

Shield connection	Iris type spring
-------------------	------------------

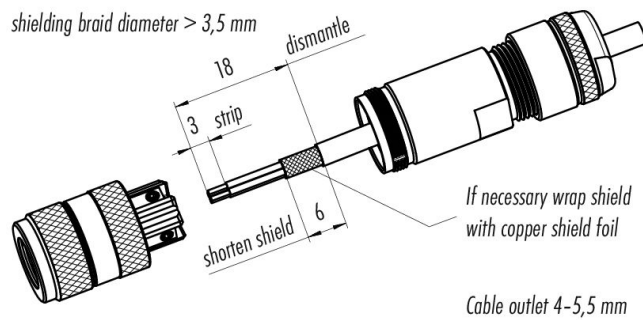
Material

Housing material	PA
Contact body material	PA
Contact material	CuZn (brass)
Contact plating	Au (gold)
Locking material	CuZn (brass)
REACH SVHC	CAS 7439-92-1 (Lead)
SCIP number	31b9c48e-0a85-49c1-8bbc-183449406af5

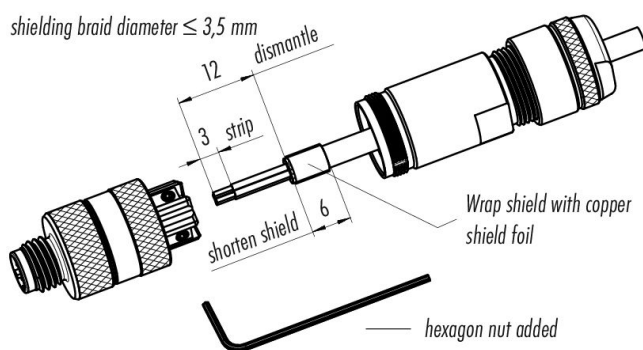
Classifications

eCl@ss 11.1	27-44-01-02
ETIM 9.0	EC002635

Assembly instructions



1. Bead housing to cable.
2. Strip cable, shorten shielding braid.
3. Connect single wires.
4. Screw housing to either male or female contact carrier and tighten pressing screw.

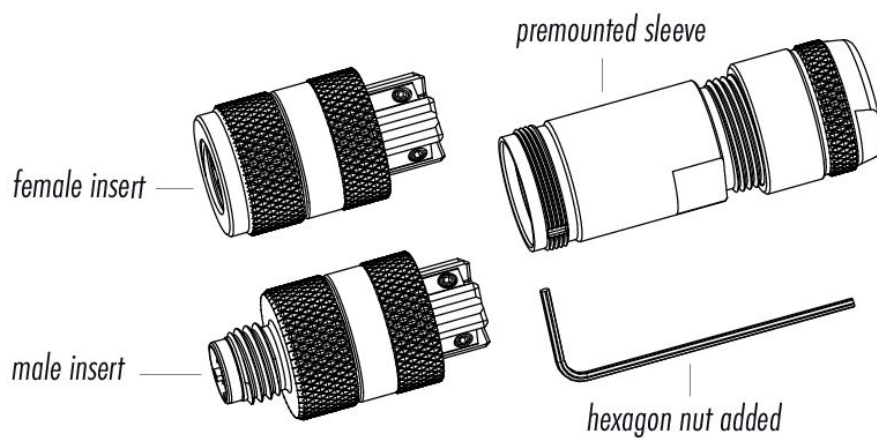


1. Bead housing to cable.
2. Strip cable, shorten shielding braid, place it over cable coating, wrap it approx. 1 1/2 times with copper shield foil and shorten foil.
3. Connect single wires.
4. Screw housing to either male or female contact carrier and tighten pressing screw.

Product data sheet
Automation technology - Data transmission

Product description	M8 Female cable connector, Contacts: 4, 4.0-5.5 mm, shieldable, screw clamp, IP67, M8x1.0
Area	M8-D
Part no.	99 3368 100 04

Component part drawing



Product description	M8 Female cable connector, Contacts: 4, 4.0-5.5 mm, shieldable, screw clamp, IP67, M8x1.0
Area	M8-D
Part no.	99 3368 100 04

Security notices

The connectors have been developed for applications in plant engineering, control and electrical equipment construction. The user is responsible for checking whether the connectors can also be used in other areas of application.

Plug connectors with enclosure protection IP67 and IP68 are not suitable for use under water. When used outdoors, the plug connectors must be protected separately against corrosion. For further information on the IP protection classes, please refer to the "Technical Information" download centre.

To lock the cable connector with the device connector, the threaded ring is tightened "hand-tight" (approx. 40 cNm).

Product data sheet

Automation technology - Data transmission

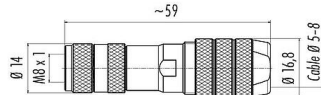


Product description	M8 Female cable connector, Contacts: 4, 5.0-8.0 mm, shieldable, screw clamp, IP67, M8x1.0
Area	M8-D
Part no.	99 3368 600 04

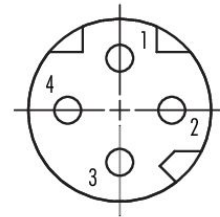
Illustration



Scale drawing



Contact arrangement (Plug-in side)



You can find the component part drawing and assembly instructions on the next page.

Technical data

General features

Part no.	99 3368 600 04
Connector design	Female cable connector
Type standard	DIN EN 61076-2-114
Version	Connector socket straight
Connector locking system	screw
Termination	screw clamp
Degree of protection	IP67
Cross-sectional area	0.14-0.50 mm ²
Cable outlet	5.0-8.0 mm
Temperature range from/to	-25 °C / 85 °C
Mechanical operation	> 100 Mating cycles
Weight (g)	34.79
Customs tariff number	85444290
Country of Origin	DE

Electrical parameters

Rated voltage	63 V
Rated impulse voltage	1500 V
Rated current	4.0 A
Insulation resistance	≥ 10 ⁸ Ω
Pollution degree	3
Overvoltage category	II
Insulating material group	II
EMC compliance	shieldable

Product data sheet

Automation technology - Data transmission



Product description	M8 Female cable connector, Contacts: 4, 5.0-8.0 mm, shieldable, screw clamp, IP67, M8x1.0
Area	M8-D
Part no.	99 3368 600 04

Shield connection	Iris type spring
-------------------	------------------

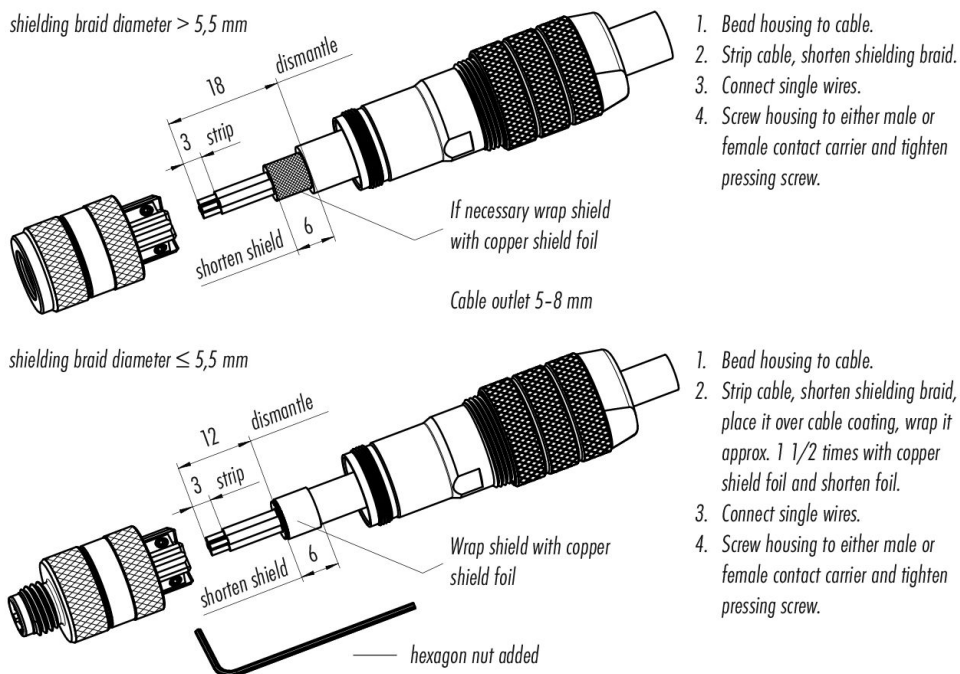
Material

Housing material	PA
Contact body material	PA
Contact material	CuZn (brass)
Contact plating	Au (gold)
Locking material	CuZn (brass)
REACH SVHC	CAS 7439-92-1 (Lead)
SCIP number	83ec6250-c343-47a6-90c1-750075a0f511

Classifications

eCl@ss 11.1	27-44-01-02
ETIM 9.0	EC002635

Assembly instructions

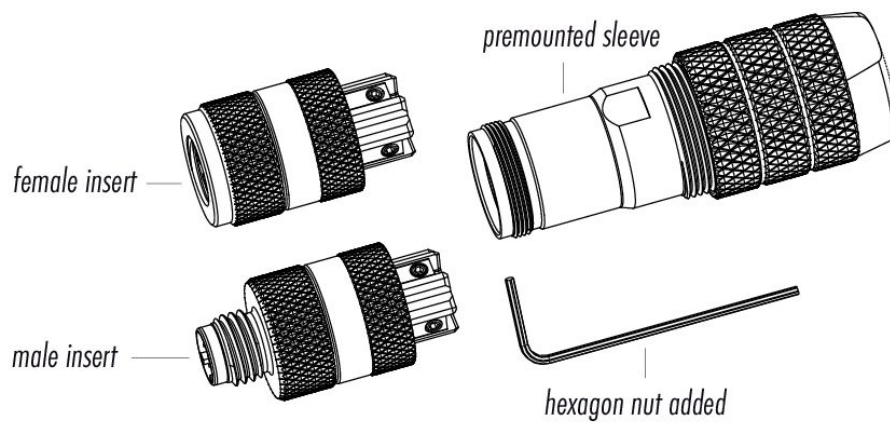


Product data sheet

Automation technology - Data transmission

Product description	M8 Female cable connector, Contacts: 4, 5.0-8.0 mm, shieldable, screw clamp, IP67, M8x1.0
Area	M8-D
Part no.	99 3368 600 04

Component part drawing



Product description	M8 Female cable connector, Contacts: 4, 5.0-8.0 mm, shieldable, screw clamp, IP67, M8x1.0
Area	M8-D
Part no.	99 3368 600 04

Security notices

The connectors have been developed for applications in plant engineering, control and electrical equipment construction. The user is responsible for checking whether the connectors can also be used in other areas of application.

Plug connectors with enclosure protection IP67 and IP68 are not suitable for use under water. When used outdoors, the plug connectors must be protected separately against corrosion. For further information on the IP protection classes, please refer to the "Technical Information" download centre.

To lock the cable connector with the device connector, the threaded ring is tightened "hand-tight" (approx. 40 cNm).

Product data sheet

Automation technology - Data transmission

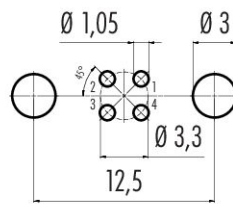


Product description **M8 Male panel mount connector, Contacts: 4, shieldable, THT, IP67**
 Area **M8-D**
 Part no. **86 6321 1120 00404**

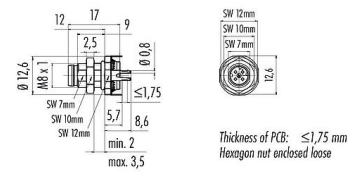
Illustration



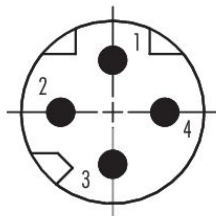
Conductor layout



Scale drawing



Contact arrangement (Plug-in side)



You can find the assembly instructions on the next page.

Technical data

General features

Part no.	86 6321 1120 00404
Connector design	Male panel mount connector
Type standard	DIN EN 61076-2-114
Version	Connector pin straight
Connector locking system	screw
Termination	THT

Product data sheet

Automation technology - Data transmission



Product description **M8 Male panel mount connector, Contacts: 4, shieldable, THT, IP67**

Area **M8-D**

Part no. **86 6321 1120 00404**

Degree of protection IP67

Temperature range from/to -40 °C / 85 °C

Mechanical operation > 100 Mating cycles

Weight (g) 4.43

Customs tariff number 85369010

Country of Origin DE

Electrical parameters

Rated voltage 63 V DC

Rated impulse voltage 1500 V

Rated current 4.0 A

Insulation resistance > 10⁸ Ω

Pollution degree 3

Insulating material group III

EMC compliance shieldable

Shield connection Shielding plate

Material

Housing material Zinc die-cast nickel-plated

Contact body material PA yellow/green

Contact material CuZn (brass) / CuSn (bronze)

Contact plating Au (gold)

REACH SVHC CAS 7439-92-1 (Lead)

SCIP number 92853bd5-c5c8-4a57-bcd9-a88a03c4d532

Classifications

eCl@ss 11.1 27-44-01-09

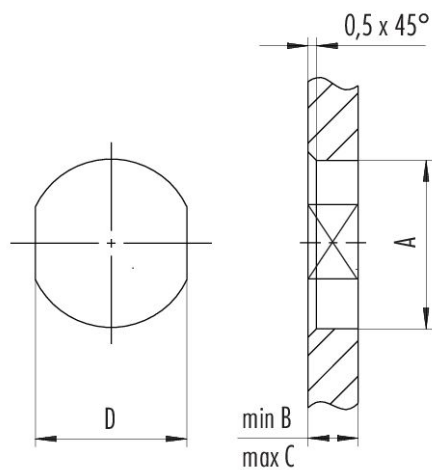
ETIM 9.0 EC003569

Product description **M8 Male panel mount connector, Contacts: 4, shieldable, THT, IP67**
Area **M8-D**
Part no. **86 6321 1120 00404**

Assembly instructions / Panel cut-out

1st Installation proposal

With flats as anti-rotation device



Thread E	A	B	C	D
M8 x 0,5	8,1	2,5	3,5	7,1
M8 x 1	8,1	2,5	3,5	7,1
M10 x 0,75	10,1	2,5	5,0	9,1

Tightening torque

M8 x 0,5 0,8 Nm
M8 x 1/M10 x 0,75 1,0 Nm

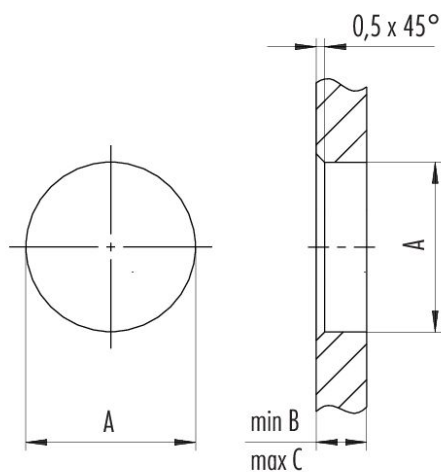
Product description **M8 Male panel mount connector, Contacts: 4, shieldable, THT, IP67**

Area **M8-D**
Part no. **86 6321 1120 00404**

Assembly instructions / Panel cut-out

2nd Installation proposal

With bore hole



Thread E	A	B	C	D
M8 x 0,5	8,1	2,5	3,5	7,1
M8 x 1	8,1	2,5	3,5	7,1
M10 x 0,75	10,1	2,5	5,0	9,1

Tightening torque

M8 x 0,5	0,8 Nm
M8 x 1/M10 x 0,75	1,0 Nm

Product description	M8 Male panel mount connector, Contacts: 4, shieldable, THT, IP67
Area	M8-D
Part no.	86 6321 1120 00404

Security notices

The connectors have been developed for applications in plant engineering, control and electrical equipment construction. The user is responsible for checking whether the connectors can also be used in other areas of application.

Plug connectors with enclosure protection IP67 and IP68 are not suitable for use under water. When used outdoors, the plug connectors must be protected separately against corrosion. For further information on the IP protection classes, please refer to the "Technical Information" download centre.

To lock the cable connector with the device connector, the threaded ring is tightened "hand-tight" (approx. 40 cNm).

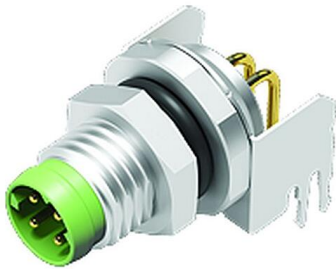
Product data sheet

Automation technology - Data transmission

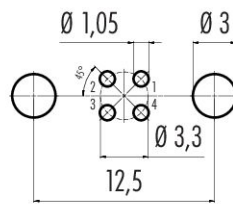


Product description **M8 Male angled panel mount connector, Contacts: 4, shieldable, THT, IP67**
 Area **M8-D**
 Part no. **86 6321 1121 00404**

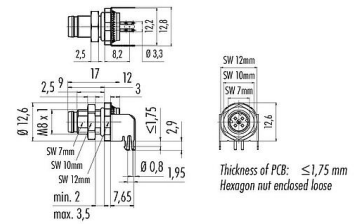
Illustration



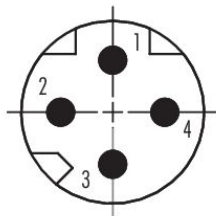
Conductor layout



Scale drawing



Contact arrangement (Plug-in side)



You can find the assembly instructions on the next page.

Technical data

General features

Part no.	86 6321 1121 00404
Connector design	Male angled panel mount connector
Type standard	DIN EN 61076-2-114
Version	Connector pin angled
Connector locking system	screw
Termination	THT

Product data sheet

Automation technology - Data transmission



Product description	M8 Male angled panel mount connector, Contacts: 4, shieldable, THT, IP67
Area	M8-D
Part no.	86 6321 1121 00404

Degree of protection	IP67
Temperature range from/to	-40 °C / 85 °C
Mechanical operation	> 100 Mating cycles
Weight (g)	4.84
Customs tariff number	85369010
Country of Origin	DE

Electrical parameters

Rated voltage	63 V DC
Rated impulse voltage	1500 V
Rated current	4.0 A
Insulation resistance	> 10 ⁸ Ω
Pollution degree	3
Insulating material group	III
EMC compliance	shieldable
Shield connection	Shielding plate

Material

Housing material	Zinc die-cast nickel-plated
Contact body material	PA yellow/green
Contact material	CuZn (brass) / CuSn (bronze)
Contact plating	Au (gold)
REACH SVHC	CAS 7439-92-1 (Lead)
SCIP number	d1070752-a819-432e-a5e2-f9e86b2ad9f5

Classifications

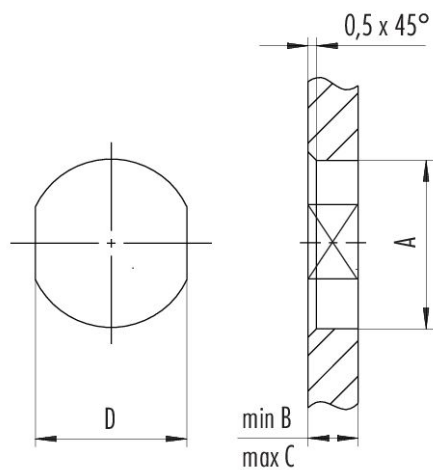
eCl@ss 11.1	27-44-01-09
ETIM 9.0	EC003569

Product description **M8 Male angled panel mount connector, Contacts: 4, shieldable, THT, IP67**
Area **M8-D**
Part no. **86 6321 1121 00404**

Assembly instructions / Panel cut-out

1st Installation proposal

With flats as anti-rotation device



Thread E	A	B	C	D
M8 x 0,5	8,1	2,5	3,5	7,1
M8 x 1	8,1	2,5	3,5	7,1
M10 x 0,75	10,1	2,5	5,0	9,1

Tightening torque

M8 x 0,5 0,8 Nm
M8 x 1/M10 x 0,75 1,0 Nm

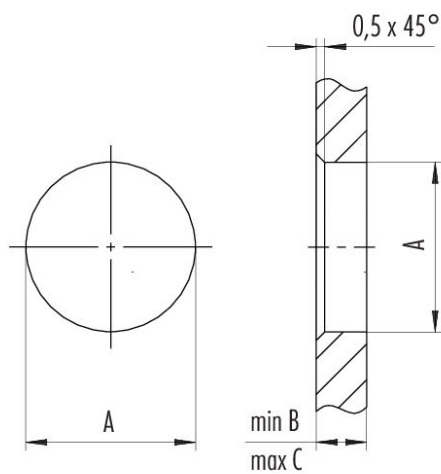
Product description **M8 Male angled panel mount connector, Contacts: 4, shieldable, THT, IP67**

Area **M8-D**
Part no. **86 6321 1121 00404**

Assembly instructions / Panel cut-out

2nd Installation proposal

With bore hole



Thread E	A	B	C	D
M8 x 0,5	8,1	2,5	3,5	7,1
M8 x 1	8,1	2,5	3,5	7,1
M10 x 0,75	10,1	2,5	5,0	9,1

Tightening torque

M8 x 0,5	0,8 Nm
M8 x 1/M10 x 0,75	1,0 Nm

Product description	M8 Male angled panel mount connector, Contacts: 4, shieldable, THT, IP67
Area	M8-D
Part no.	86 6321 1121 00404

Security notices

The connectors have been developed for applications in plant engineering, control and electrical equipment construction. The user is responsible for checking whether the connectors can also be used in other areas of application.

Plug connectors with enclosure protection IP67 and IP68 are not suitable for use under water. When used outdoors, the plug connectors must be protected separately against corrosion. For further information on the IP protection classes, please refer to the "Technical Information" download centre.

To lock the cable connector with the device connector, the threaded ring is tightened "hand-tight" (approx. 40 cNm).

Product data sheet

Automation technology - Data transmission

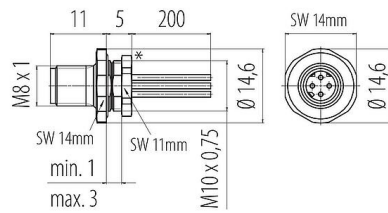


Product description	M8 Male panel mount connector, Contacts: 4, unshielded, single wires, IP67, M8x1.0
Area	series 818
Part no.	76 6221 0011 00404-0200

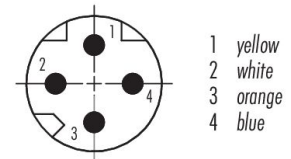
Illustration



Scale drawing



Contact arrangement (Plug-in side)



You can find the assembly instructions on the next page.

Technical data

General features

Part no.	76 6221 0011 00404-0200
Connector design	Male panel mount connector
Wire length	0.2 m (Standard 0.2 m. Other lengths are available on request).
Version	Panel mount Connectors
Connector locking system	screw
Termination	single wires
Degree of protection	IP67
Cross-sectional area	0.25 mm ² / AWG 24
Temperature range from/to	-40 °C / 85 °C
Mechanical operation	> 100 Mating cycles
Weight (g)	7.77
Customs tariff number	85369010
Country of Origin	DE

Electrical parameters

Rated voltage	63 V
Rated impulse voltage	1500 V
Rated current	4.0 A
Insulation resistance	> 10 ⁸ Ω
Pollution degree	3
Overvoltage category	III
Insulating material group	III
EMC compliance	unshielded

Product data sheet

Automation technology - Data transmission



Product description	M8 Male panel mount connector, Contacts: 4, unshielded, single wires, IP67, M8x1.0
Area	series 818
Part no.	76 6221 0011 00404-0200

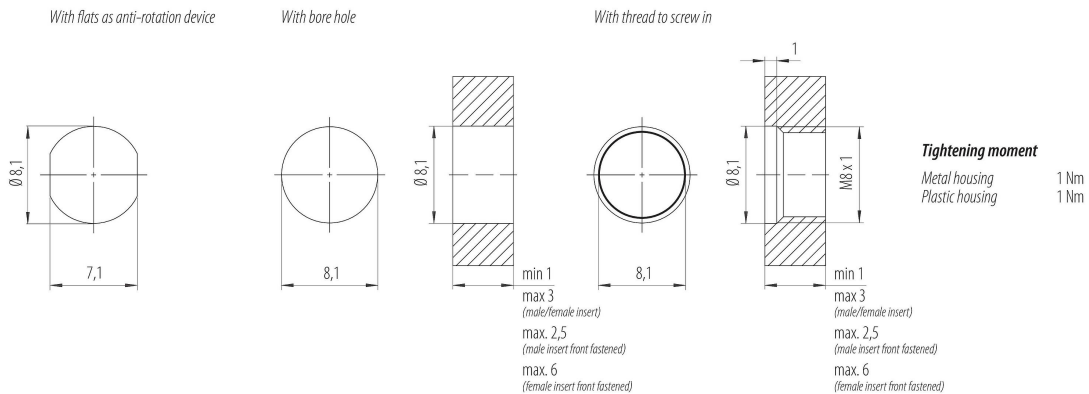
Material

Housing material	CuZn (brass)
Contact body material	Polymid
Contact material	CuZn (brass lead-free)
Contact plating	Au (gold)
REACH SVHC	None (No pollutants) None (No pollutants)
SCIP number	SCIP-number not available

Declarations of conformity

RoHS Directive	2011/65/EU (EN 50581:2012)
----------------	----------------------------

Assembly instructions / Panel cut-out



Product description	M8 Male panel mount connector, Contacts: 4, unshielded, single wires, IP67, M8x1.0
Area	series 818
Part no.	76 6221 0011 00404-0200

Security notices

The connector must not be plugged or unplugged under load. Non-observance and improper use can result in personal injury.

The connectors have been developed for applications in plant engineering, control and electrical equipment construction. The user is responsible for checking whether the connectors can also be used in other areas of application.

Connectors which are used in circuits with voltages dangerous to the touch may only be installed and used by, or under the supervision of, persons with electrical engineering training, taking into account the applicable regulations and standards.

The user must take suitable safety precautions to ensure that the connector cannot be accidentally disconnected.

Plug connectors with enclosure protection IP67 and IP68 are not suitable for use under water. When used outdoors, the plug connectors must be protected separately against corrosion. For further information on the IP protection classes, please refer to the "Technical Information" download centre.

Please observe the pollution degree and the overvoltage category. For further information, please refer to the download center "Technical Information".

To lock the cable connector with the device connector, the threaded ring is tightened "hand-tight" (approx. 40 cNm).

Product data sheet

Automation technology - Data transmission



Product description **M8 Male panel mount connector, Contacts: 4, unshielded, single wires, IP67, M8x1.0, front fastened**

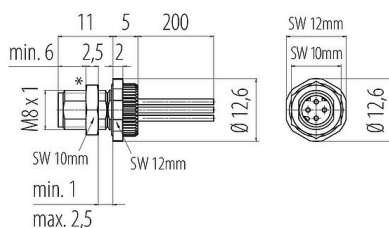
Area **series 818**

Part no. **76 6321 1011 00404-0200**

Illustration

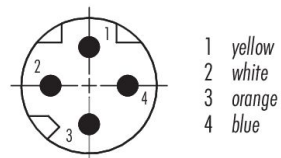


Scale drawing



* Hexagon nut enclosed loose

Contact arrangement (Plug-in side)



You can find the assembly instructions on the next page.

Technical data

General features

Part no.	76 6321 1011 00404-0200
Connector design	Male panel mount connector
Wire length	0.2 m (Standard 0.2 m. Other lengths are available on request).
Version	Panel mount Connectors
Connector locking system	screw
Termination	single wires
Degree of protection	IP67
Cross-sectional area	0.25 mm ² / AWG 24
Temperature range from/to	-40 °C / 85 °C
Mechanical operation	> 100 Mating cycles
Weight (g)	7.63
Customs tariff number	85369010
Country of Origin	DE

Electrical parameters

Rated voltage	63 V
Rated impulse voltage	1500 V
Rated current	4.0 A
Insulation resistance	> 10 ⁸ Ω
Pollution degree	3
Overvoltage category	III
Insulating material group	III
EMC compliance	unshielded

Product data sheet

Automation technology - Data transmission



Product description	M8 Male panel mount connector, Contacts: 4, unshielded, single wires, IP67, M8x1.0, front fastened
Area	series 818
Part no.	76 6321 1011 00404-0200

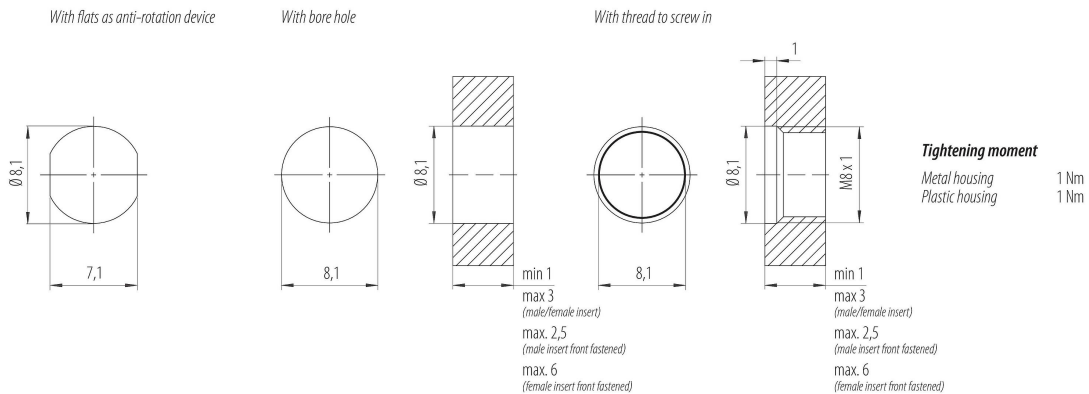
Material

Housing material	CuZn (brass)
Contact body material	Polymid
Contact material	CuZn (brass lead-free)
Contact plating	Au (gold)
REACH SVHC	None (No pollutants) None (No pollutants)
SCIP number	SCIP-number not available

Declarations of conformity

RoHS Directive	2011/65/EU (EN 50581:2012)
----------------	----------------------------

Assembly instructions / Panel cut-out



Product description	M8 Male panel mount connector, Contacts: 4, unshielded, single wires, IP67, M8x1.0, front fastened
Area	series 818
Part no.	76 6321 1011 00404-0200

Security notices

The connector must not be plugged or unplugged under load. Non-observance and improper use can result in personal injury.

The connectors have been developed for applications in plant engineering, control and electrical equipment construction. The user is responsible for checking whether the connectors can also be used in other areas of application.

Connectors which are used in circuits with voltages dangerous to the touch may only be installed and used by, or under the supervision of, persons with electrical engineering training, taking into account the applicable regulations and standards.

The user must take suitable safety precautions to ensure that the connector cannot be accidentally disconnected.

Plug connectors with enclosure protection IP67 and IP68 are not suitable for use under water. When used outdoors, the plug connectors must be protected separately against corrosion. For further information on the IP protection classes, please refer to the "Technical Information" download centre.

Please observe the pollution degree and the overvoltage category. For further information, please refer to the download center "Technical Information".

To lock the cable connector with the device connector, the threaded ring is tightened "hand-tight" (approx. 40 cNm).

Product data sheet

Automation technology - Data transmission

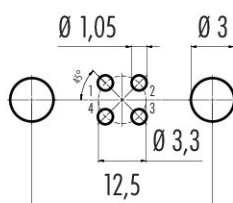


Product description **M8 Female panel mount connector, Contacts: 4, shieldable, THT, IP67**
 Area **M8-D**
 Part no. **86 6620 1120 00404**

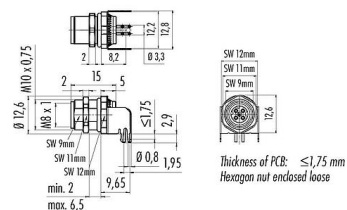
Illustration



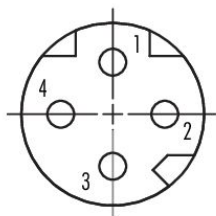
Conductor layout



Scale drawing



Contact arrangement (Plug-in side)



You can find the assembly instructions on the next page.

Technical data

General features

Part no.	86 6620 1120 00404
Connector design	Female panel mount connector
Type standard	DIN EN 61076-2-114
Version	Connector socket straight
Connector locking system	screw
Termination	THT

Product data sheet

Automation technology - Data transmission



Product description	M8 Female panel mount connector, Contacts: 4, shieldable, THT, IP67
Area	M8-D
Part no.	86 6620 1120 00404

Degree of protection	IP67
Temperature range from/to	-40 °C / 85 °C
Mechanical operation	> 100 Mating cycles
Weight (g)	5.14
Customs tariff number	85369010
Country of Origin	DE

Electrical parameters

Rated voltage	63 V DC
Rated impulse voltage	1500 V
Rated current	4.0 A
Insulation resistance	> 10 ⁸ Ω
Pollution degree	3
Insulating material group	III
EMC compliance	shieldable
Shield connection	Shielding plate

Material

Housing material	Zinc die-cast nickel-plated
Contact body material	PA yellow/green
Contact material	CuZn (brass) / CuSn (bronze)
Contact plating	Au (gold)
REACH SVHC	CAS 7439-92-1 (Lead)
SCIP number	5c2c0a60-fe59-46aa-9335-6941b649fc74

Classifications

eCl@ss 11.1	27-44-01-09
ETIM 9.0	EC003569

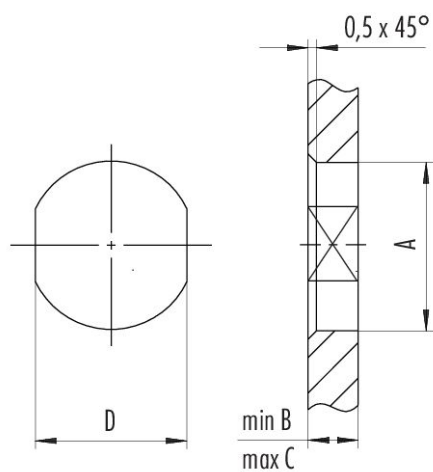
Product description **M8 Female panel mount connector, Contacts: 4, shieldable, THT, IP67**

Area **M8-D**
Part no. **86 6620 1120 00404**

Assembly instructions / Panel cut-out

1st Installation proposal

With flats as anti-rotation device



Thread E	A	B	C	D
M8 x 0,5	8,1	2,5	3,5	7,1
M8 x 1	8,1	2,5	3,5	7,1
M10 x 0,75	10,1	2,5	5,0	9,1

Tightening torque

M8 x 0,5 0,8 Nm
M8 x 1/M10 x 0,75 1,0 Nm

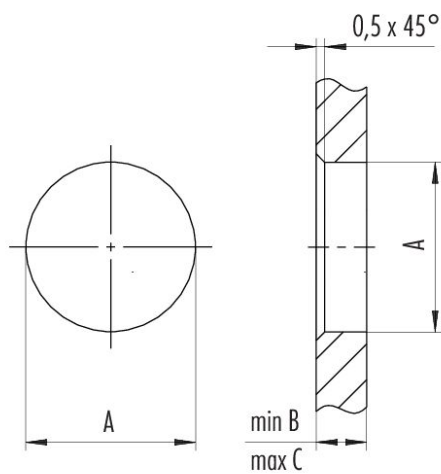
Product description **M8 Female panel mount connector, Contacts: 4, shieldable, THT, IP67**

Area **M8-D**
Part no. **86 6620 1120 00404**

Assembly instructions / Panel cut-out

2nd Installation proposal

With bore hole



Thread E	A	B	C	D
M8 x 0,5	8,1	2,5	3,5	7,1
M8 x 1	8,1	2,5	3,5	7,1
M10 x 0,75	10,1	2,5	5,0	9,1

Tightening torque

M8 x 0,5	0,8 Nm
M8 x 1/M10 x 0,75	1,0 Nm

Product description	M8 Female panel mount connector, Contacts: 4, shieldable, THT, IP67
Area	M8-D
Part no.	86 6620 1120 00404

Security notices

The connectors have been developed for applications in plant engineering, control and electrical equipment construction. The user is responsible for checking whether the connectors can also be used in other areas of application.

Plug connectors with enclosure protection IP67 and IP68 are not suitable for use under water. When used outdoors, the plug connectors must be protected separately against corrosion. For further information on the IP protection classes, please refer to the "Technical Information" download centre.

To lock the cable connector with the device connector, the threaded ring is tightened "hand-tight" (approx. 40 cNm).

Product data sheet

Automation technology - Data transmission

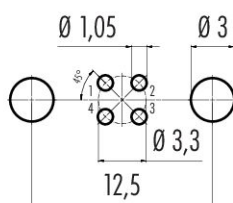


Product description **M8 Female angled panel mount connector, Contacts: 4, shieldable, THT, IP67**
 Area **M8-D**
 Part no. **86 6620 1121 00404**

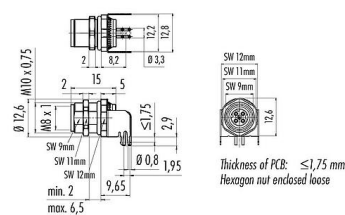
Illustration



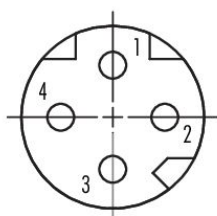
Conductor layout



Scale drawing



Contact arrangement (Plug-in side)



You can find the assembly instructions on the next page.

Technical data

General features

Part no.	86 6620 1121 00404
Connector design	Female angled panel mount connector
Type standard	DIN EN 61076-2-114
Version	Connector socket angled
Connector locking system	screw
Termination	THT

Product data sheet

Automation technology - Data transmission



Product description	M8 Female angled panel mount connector, Contacts: 4, shieldable, THT, IP67
Area	M8-D
Part no.	86 6620 1121 00404

Degree of protection	IP67
Temperature range from/to	-40 °C / 85 °C
Mechanical operation	> 100 Mating cycles
Weight (g)	5.50
Customs tariff number	85369010
Country of Origin	DE

Electrical parameters

Rated voltage	63 V DC
Rated impulse voltage	1500 V
Rated current	4.0 A
Insulation resistance	> 10 ⁸ Ω
Pollution degree	3
Insulating material group	III
EMC compliance	shieldable
Shield connection	Shielding plate

Material

Housing material	Zinc die-cast nickel-plated
Contact body material	PA yellow/green
Contact material	CuZn (brass) / CuSn (bronze)
Contact plating	Au (gold)
REACH SVHC	CAS 7439-92-1 (Lead)
SCIP number	72452042-45bb-4044-a9ab-ff976852971a

Classifications

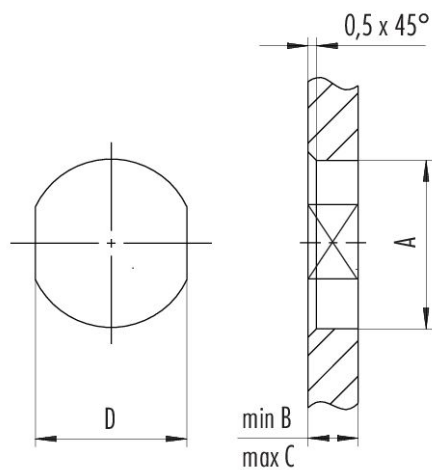
eCl@ss 11.1	27-44-01-09
ETIM 9.0	EC003569

Product description **M8 Female angled panel mount connector, Contacts: 4, shieldable, THT, IP67**
Area **M8-D**
Part no. **86 6620 1121 00404**

Assembly instructions / Panel cut-out

1st Installation proposal

With flats as anti-rotation device



Thread E	A	B	C	D
M8 x 0,5	8,1	2,5	3,5	7,1
M8 x 1	8,1	2,5	3,5	7,1
M10 x 0,75	10,1	2,5	5,0	9,1

Tightening torque

M8 x 0,5 0,8 Nm
M8 x 1/M10 x 0,75 1,0 Nm

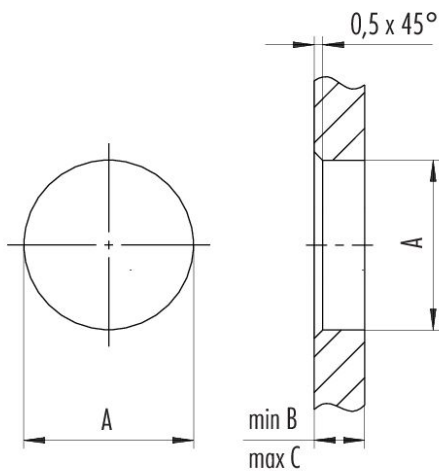
Product data sheet
Automation technology - Data transmission



Product description **M8 Female angled panel mount connector, Contacts: 4, shieldable, THT, IP67**
 Area **M8-D**
 Part no. **86 6620 1121 00404**

Assembly instructions / Panel cut-out

2nd Installation proposal
With bore hole



<i>Thread E</i>	A	B	C	D
M8 x 0,5	8,1	2,5	3,5	7,1
M8 x 1	8,1	2,5	3,5	7,1
M10 x 0,75	10,1	2,5	5,0	9,1

Tightening torque

M8 x 0,5 0,8 Nm
 M8 x 1 / M10 x 0,75 1,0 Nm

Product description	M8 Female angled panel mount connector, Contacts: 4, shieldable, THT, IP67
Area	M8-D
Part no.	86 6620 1121 00404

Security notices

The connectors have been developed for applications in plant engineering, control and electrical equipment construction. The user is responsible for checking whether the connectors can also be used in other areas of application.

Plug connectors with enclosure protection IP67 and IP68 are not suitable for use under water. When used outdoors, the plug connectors must be protected separately against corrosion. For further information on the IP protection classes, please refer to the "Technical Information" download centre.

To lock the cable connector with the device connector, the threaded ring is tightened "hand-tight" (approx. 40 cNm).

Product data sheet

Automation technology - Data transmission

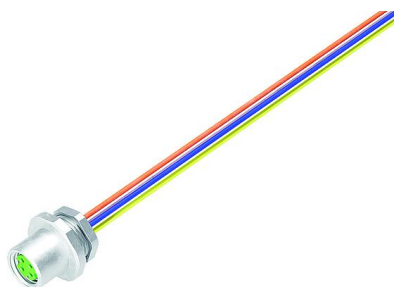


Product description **M8 Male panel mount connector, Contacts: 4, unshielded, single wires, IP67, M8x1.0**

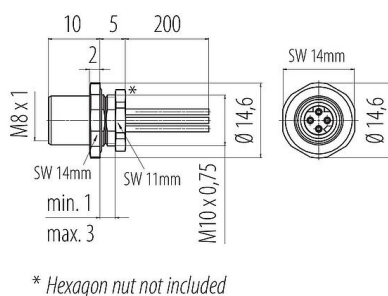
Area **series 818**

Part no. **76 6220 0011 00404-0200**

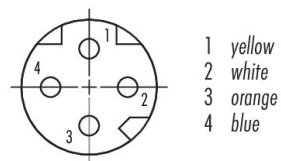
Illustration



Scale drawing



Contact arrangement (Plug-in side)



You can find the assembly instructions on the next page.

Technical data

General features

Part no.	76 6220 0011 00404-0200
Connector design	Male panel mount connector
Wire length	0.2 m (Standard 0.2 m. Other lengths are available on request).
Version	Panel mount Connectors
Connector locking system	screw
Termination	single wires
Degree of protection	IP67
Cross-sectional area	0.25 mm ² / AWG 24
Temperature range from/to	-40 °C / 85 °C
Mechanical operation	> 100 Mating cycles
Weight (g)	8.67
Customs tariff number	85369010
Country of Origin	DE

Electrical parameters

Rated voltage	63 V
Rated impulse voltage	1500 V
Rated current	4.0 A
Insulation resistance	> 10 ⁸ Ω
Pollution degree	3
Overvoltage category	III
Insulating material group	III
EMC compliance	unshielded

Product data sheet

Automation technology - Data transmission



Product description	M8 Male panel mount connector, Contacts: 4, unshielded, single wires, IP67, M8x1.0
Area	series 818
Part no.	76 6220 0011 00404-0200

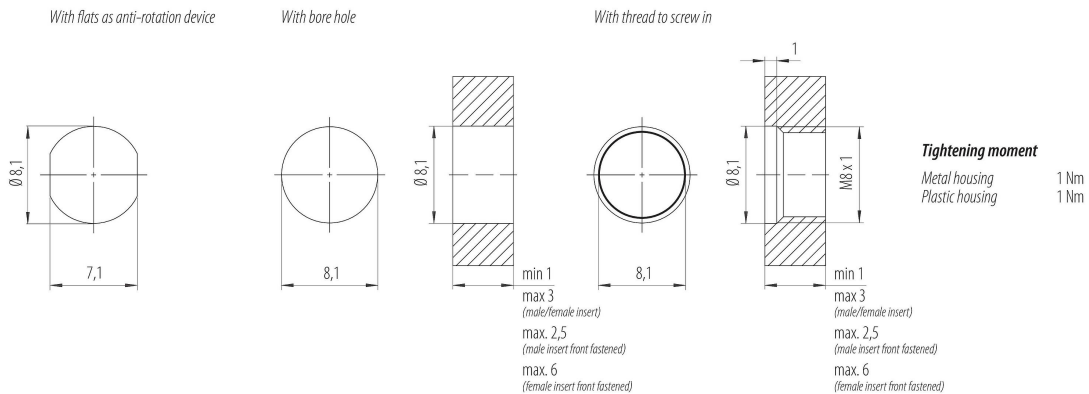
Material

Housing material	CuZn (brass)
Contact body material	Polymid
Contact material	CuZn (brass lead-free)
Contact plating	Au (gold)
REACH SVHC	None (No pollutants) None (No pollutants)
SCIP number	SCIP-number not available

Declarations of conformity

RoHS Directive	2011/65/EU (EN 50581:2012)
----------------	----------------------------

Assembly instructions / Panel cut-out



Product description	M8 Male panel mount connector, Contacts: 4, unshielded, single wires, IP67, M8x1.0
Area	series 818
Part no.	76 6220 0011 00404-0200

Security notices

The connector must not be plugged or unplugged under load. Non-observance and improper use can result in personal injury.

The connectors have been developed for applications in plant engineering, control and electrical equipment construction. The user is responsible for checking whether the connectors can also be used in other areas of application.

Connectors which are used in circuits with voltages dangerous to the touch may only be installed and used by, or under the supervision of, persons with electrical engineering training, taking into account the applicable regulations and standards.

The user must take suitable safety precautions to ensure that the connector cannot be accidentally disconnected.

Plug connectors with enclosure protection IP67 and IP68 are not suitable for use under water. When used outdoors, the plug connectors must be protected separately against corrosion. For further information on the IP protection classes, please refer to the "Technical Information" download centre.

Please observe the pollution degree and the overvoltage category. For further information, please refer to the download center "Technical Information".

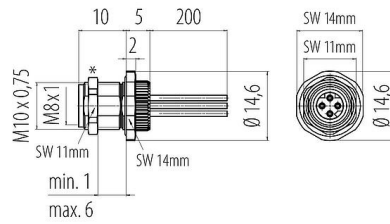
To lock the cable connector with the device connector, the threaded ring is tightened "hand-tight" (approx. 40 cNm).

Product description	M8 Male panel mount connector, Contacts: 4, unshielded, single wires, IP67, M8x1.0, front fastened
Area	series 818
Part no.	76 6620 1011 00404-0200

Illustration

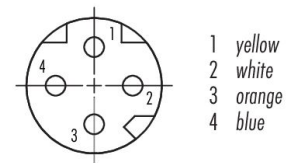


Scale drawing



* Hexagon nut enclosed loose

Contact arrangement (Plug-in side)



You can find the assembly instructions on the next page.

Technical data

General features

Part no.	76 6620 1011 00404-0200
Connector design	Male panel mount connector
Wire length	0.2 m (Standard 0.2 m. Other lengths are available on request).
Version	Panel mount Connectors
Connector locking system	screw
Termination	single wires
Degree of protection	IP67
Cross-sectional area	0.25 mm ² / AWG 24
Temperature range from/to	-40 °C / 85 °C
Mechanical operation	> 100 Mating cycles
Weight (g)	9.25
Customs tariff number	85369010
Country of Origin	DE

Electrical parameters

Rated voltage	63 V
Rated impulse voltage	1500 V
Rated current	4.0 A
Insulation resistance	> 10 ⁸ Ω
Pollution degree	3
Overvoltage category	III
Insulating material group	III
EMC compliance	unshielded

Product data sheet

Automation technology - Data transmission

Product description	M8 Male panel mount connector, Contacts: 4, unshielded, single wires, IP67, M8x1.0, front fastened
Area	series 818
Part no.	76 6620 1011 00404-0200

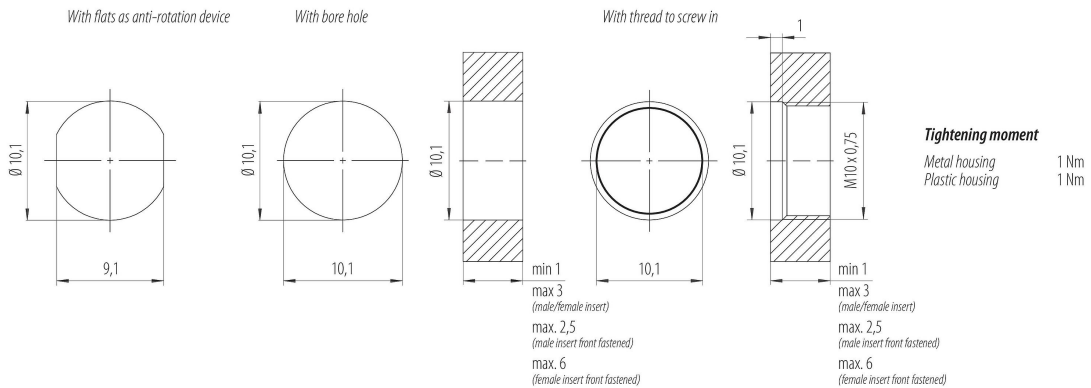
Material

Housing material	CuZn (brass)
Contact body material	Polymid
Contact material	CuZn (brass lead-free)
Contact plating	Au (gold)
REACH SVHC	None (No pollutants) None (No pollutants)
SCIP number	SCIP-number not available

Declarations of conformity

RoHS Directive	2011/65/EU (EN 50581:2012)
----------------	----------------------------

Assembly instructions / Panel cut-out



Product description	M8 Male panel mount connector, Contacts: 4, unshielded, single wires, IP67, M8x1.0, front fastened
Area	series 818
Part no.	76 6620 1011 00404-0200

Security notices

The connector must not be plugged or unplugged under load. Non-observance and improper use can result in personal injury.

The connectors have been developed for applications in plant engineering, control and electrical equipment construction. The user is responsible for checking whether the connectors can also be used in other areas of application.

Connectors which are used in circuits with voltages dangerous to the touch may only be installed and used by, or under the supervision of, persons with electrical engineering training, taking into account the applicable regulations and standards.

The user must take suitable safety precautions to ensure that the connector cannot be accidentally disconnected.

Plug connectors with enclosure protection IP67 and IP68 are not suitable for use under water. When used outdoors, the plug connectors must be protected separately against corrosion. For further information on the IP protection classes, please refer to the "Technical Information" download centre.

Please observe the pollution degree and the overvoltage category. For further information, please refer to the download center "Technical Information".

To lock the cable connector with the device connector, the threaded ring is tightened "hand-tight" (approx. 40 cNm).

Product data sheet

Automation technology - Data transmission

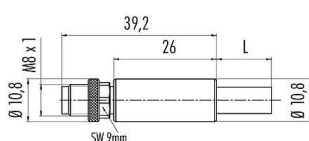


Product description	M8 Male cable connector, Contacts: 4, shielded, moulded on the cable, IP67, Profinet/Ethernet CAT5e, PUR, green, 4 x AWG 22, 2 m
Area	M8-D
Part no.	77 5429 0000 50704-0200

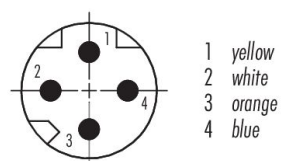
Illustration



Scale drawing



Contact arrangement (Plug-in side)



Technical data

General features

Part no.	77 5429 0000 50704-0200
Connector design	Male cable connector
Type standard	DIN EN 61076-2-114
Cable length	2 m (Standard 2 m and 5 m. Other lengths are available on request.)
Version	Connector pin straight
Connector locking system	M8x1
Termination	moulded on the cable
Degree of protection	IP67
Cross-sectional area	0.34 mm ² / AWG 22
Temperature range from/to	-25 °C / 85 °C
Mechanical operation	> 100 Mating cycles
Weight (g)	130.00
Customs tariff number	85444290
Country of Origin	DE

Electrical parameters

Rated voltage	63 V
Rated impulse voltage	1500 V
Rated current	4.0 A
Insulation resistance	> 10 ⁸ Ω
Pollution degree	3
Overvoltage category	II
Insulating material group	I
EMC compliance	shielded
Shield connection	Shield on the threaded ring

Material

Contact body material	PUR black
-----------------------	-----------

Product data sheet

Automation technology - Data transmission



Product description **M8 Male cable connector, Contacts: 4, shielded, moulded on the cable, IP67, Profinet/Ethernet CAT5e, PUR, green, 4 x AWG 22, 2 m**

Area **M8-D**
Part no. **77 5429 0000 50704-0200**

Contact material	CuZn (brass)
Contact plating	Au (gold)
Locking material	CuZn (brass)
REACH SVHC	CAS 7439-92-1 (Lead)
SCIP number	4182f23a-980d-4022-8f60-cdde6dd0bb79

Classifications

eCl@ss 11.1	27-06-03-11
ETIM 9.0	EC002638

Declarations of conformity

RoHS Directive	2011/65/EU (EN 50581:2012)
----------------	----------------------------

Cable data - Structure of the cable

Cable type	Profinet/Ethernet CAT5e
Cable diameter	6.7 mm
Cross section	4 x AWG 22
Sheath material	PUR
Single-lead insulation	Polyolefin
Cable color	green

Cable data - Electrical properties

Conductor resistance	55 Ω/Km (20°C)
----------------------	----------------

Cable data - Mechanical properties

Bending radius, fixed cable	≥ 5 x Ø
Bending radius, moving cable	≥ 15 x Ø
Bending cycles	2 million
Permitted acceleration	max. 2 m/s ²
Travel distance, horizontal	max. 5 m
Travel distance, vertical	max. 5 m
Travel speed	200 m/min

Cable data - Thermal properties

Temperature range cable in move from/to	-20 °C / 60 °C
Temperature range cable fixed from/to	-40 °C / 80 °C

Cable data - Other features

Halogen free	yes
--------------	-----

Product description	M8 Male cable connector, Contacts: 4, shielded, moulded on the cable, IP67, Profinet/Ethernet CAT5e, PUR, green, 4 x AWG 22, 2 m
Area	M8-D
Part no.	77 5429 0000 50704-0200

Security notices

The connectors have been developed for applications in plant engineering, control and electrical equipment construction. The user is responsible for checking whether the connectors can also be used in other areas of application.

Plug connectors with enclosure protection IP67 and IP68 are not suitable for use under water. When used outdoors, the plug connectors must be protected separately against corrosion. For further information on the IP protection classes, please refer to the "Technical Information" download centre.

To lock the cable connector with the device connector, the threaded ring is tightened "hand-tight" (approx. 40 cNm).

Product data sheet

Automation technology - Data transmission

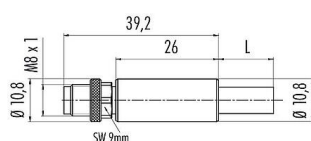


Product description	M8 Male cable connector, Contacts: 4, shielded, moulded on the cable, IP67, Profinet/Ethernet CAT5e, PUR, green, 4 x AWG 22, 5 m
Area	M8-D
Part no.	77 5429 0000 50704-0500

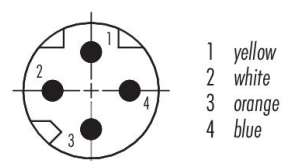
Illustration



Scale drawing



Contact arrangement (Plug-in side)



Technical data

General features

Part no.	77 5429 0000 50704-0500
Connector design	Male cable connector
Type standard	DIN EN 61076-2-114
Cable length	5 m (Standard 2 m and 5 m. Other lengths are available on request.)
Version	Connector pin straight
Connector locking system	M8x1
Termination	moulded on the cable
Degree of protection	IP67
Cross-sectional area	0.34 mm ² / AWG 22
Temperature range from/to	-25 °C / 85 °C
Mechanical operation	> 100 Mating cycles
Weight (g)	130.00
Customs tariff number	85444290
Country of Origin	DE

Electrical parameters

Rated voltage	63 V
Rated impulse voltage	1500 V
Rated current	4.0 A
Insulation resistance	> 10 ⁸ Ω
Pollution degree	3
Overvoltage category	II
Insulating material group	I
EMC compliance	shielded
Shield connection	Shield on the threaded ring

Material

Contact body material	PUR black
-----------------------	-----------

Product data sheet

Automation technology - Data transmission



Product description	M8 Male cable connector, Contacts: 4, shielded, moulded on the cable, IP67, Profinet/Ethernet CAT5e, PUR, green, 4 x AWG 22, 5 m
Area	M8-D
Part no.	77 5429 0000 50704-0500

Contact material	CuZn (brass)
Contact plating	Au (gold)
Locking material	CuZn (brass)
REACH SVHC	CAS 7439-92-1 (Lead)
SCIP number	4182f23a-980d-4022-8f60-cdde6dd0bb79

Classifications

eCl@ss 11.1	27-06-03-11
ETIM 9.0	EC002638

Declarations of conformity

RoHS Directive	2011/65/EU (EN 50581:2012)
----------------	----------------------------

Cable data - Structure of the cable

Cable type	Profinet/Ethernet CAT5e
Cable diameter	6.7 mm
Cross section	4 x AWG 22
Sheath material	PUR
Single-lead insulation	Polyolefin
Cable color	green

Cable data - Electrical properties

Conductor resistance	55 Ω/Km (20°C)
----------------------	----------------

Cable data - Mechanical properties

Bending radius, fixed cable	≥ 5 x Ø
Bending radius, moving cable	≥ 15 x Ø
Bending cycles	2 million
Permitted acceleration	max. 2 m/s ²
Travel distance, horizontal	max. 5 m
Travel distance, vertical	max. 5 m
Travel speed	200 m/min

Cable data - Thermal properties

Temperature range cable in move from/to	-20 °C / 60 °C
Temperature range cable fixed from/to	-40 °C / 80 °C

Cable data - Other features

Halogen free	yes
--------------	-----

Product description	M8 Male cable connector, Contacts: 4, shielded, moulded on the cable, IP67, Profinet/Ethernet CAT5e, PUR, green, 4 x AWG 22, 5 m
Area	M8-D
Part no.	77 5429 0000 50704-0500

Security notices

The connectors have been developed for applications in plant engineering, control and electrical equipment construction. The user is responsible for checking whether the connectors can also be used in other areas of application.

Plug connectors with enclosure protection IP67 and IP68 are not suitable for use under water. When used outdoors, the plug connectors must be protected separately against corrosion. For further information on the IP protection classes, please refer to the "Technical Information" download centre.

To lock the cable connector with the device connector, the threaded ring is tightened "hand-tight" (approx. 40 cNm).

Product data sheet

Automation technology - Data transmission

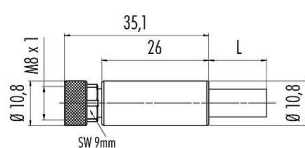


Product description	M8 Female cable connector, Contacts: 4, shielded, moulded on the cable, IP67, Profinet/Ethernet CAT5e, PUR, green, 4 x AWG 22, 2 m
Area	M8-D
Part no.	77 5430 0000 50704-0200

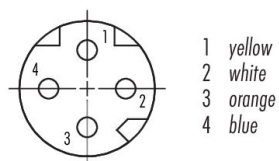
Illustration



Scale drawing



Contact arrangement (Plug-in side)



Technical data

General features

Part no.	77 5430 0000 50704-0200
Connector design	Female cable connector
Type standard	DIN EN 61076-2-114
Cable length	2 m (Standard 2 m and 5 m. Other lengths are available on request.)
Version	Connector socket straight
Connector locking system	M8x1
Termination	moulded on the cable
Degree of protection	IP67
Cross-sectional area	0.34 mm ² / AWG 22
Temperature range from/to	-25 °C / 85 °C
Mechanical operation	> 100 Mating cycles
Weight (g)	133.00
Customs tariff number	85444290
Country of Origin	DE

Electrical parameters

Rated voltage	63 V DC
Rated impulse voltage	1500 V
Rated current	4.0 A
Insulation resistance	> 10 ⁸ Ω
Pollution degree	3
Overvoltage category	II
Insulating material group	I
EMC compliance	shielded
Shield connection	Shield on the threaded ring

Material

Contact body material	PUR black
-----------------------	-----------

Product data sheet

Automation technology - Data transmission



Product description	M8 Female cable connector, Contacts: 4, shielded, moulded on the cable, IP67, Profinet/Ethernet CAT5e, PUR, green, 4 x AWG 22, 2 m
Area	M8-D
Part no.	77 5430 0000 50704-0200

Contact material	CuZn (brass)
Contact plating	Au (gold)
Locking material	CuZn (brass)
REACH SVHC	CAS 7439-92-1 (Lead)
SCIP number	044e3ab1-9fcd-4150-8bc1-fd354c7b3073

Classifications

eCl@ss 11.1	27-06-03-11
ETIM 9.0	EC002638

Declarations of conformity

RoHS Directive	2011/65/EU (EN 50581:2012)
----------------	----------------------------

Cable data - Structure of the cable

Cable type	Profinet/Ethernet CAT5e
Cable diameter	6.7 mm
Cross section	4 x AWG 22
Sheath material	PUR
Single-lead insulation	Polyolefin
Cable color	green

Cable data - Electrical properties

Conductor resistance	55 Ω/Km (20°C)
----------------------	----------------

Cable data - Mechanical properties

Bending radius, fixed cable	≥ 5 x Ø
Bending radius, moving cable	≥ 15 x Ø
Bending cycles	2 million
Permitted acceleration	max. 2 m/s ²
Travel distance, horizontal	max. 5 m
Travel distance, vertical	max. 5 m
Travel speed	200 m/min

Cable data - Thermal properties

Temperature range cable in move from/to	-20 °C / 60 °C
Temperature range cable fixed from/to	-40 °C / 80 °C

Cable data - Other features

Halogen free	yes
--------------	-----

Product description	M8 Female cable connector, Contacts: 4, shielded, moulded on the cable, IP67, Profinet/Ethernet CAT5e, PUR, green, 4 x AWG 22, 2 m
Area	M8-D
Part no.	77 5430 0000 50704-0200

Security notices

The connectors have been developed for applications in plant engineering, control and electrical equipment construction. The user is responsible for checking whether the connectors can also be used in other areas of application.

Plug connectors with enclosure protection IP67 and IP68 are not suitable for use under water. When used outdoors, the plug connectors must be protected separately against corrosion. For further information on the IP protection classes, please refer to the "Technical Information" download centre.

To lock the cable connector with the device connector, the threaded ring is tightened "hand-tight" (approx. 40 cNm).

Product data sheet

Automation technology - Data transmission

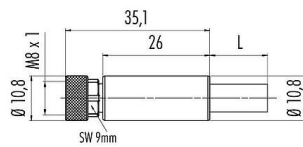


Product description	M8 Female cable connector, Contacts: 4, shielded, moulded on the cable, IP67, Profinet/Ethernet CAT5e, PUR, green, 4 x AWG 22, 5 m
Area	M8-D
Part no.	77 5430 0000 50704-0500

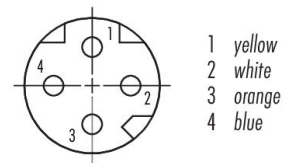
Illustration



Scale drawing



Contact arrangement (Plug-in side)



Technical data

General features

Part no.	77 5430 0000 50704-0500
Connector design	Female cable connector
Type standard	DIN EN 61076-2-114
Cable length	5 m (Standard 2 m and 5 m. Other lengths are available on request.)
Version	Connector socket straight
Connector locking system	M8x1
Termination	moulded on the cable
Degree of protection	IP67
Cross-sectional area	0.34 mm ² / AWG 22
Temperature range from/to	-25 °C / 85 °C
Mechanical operation	> 100 Mating cycles
Weight (g)	133.00
Customs tariff number	85444290
Country of Origin	DE

Electrical parameters

Rated voltage	63 V DC
Rated impulse voltage	1500 V
Rated current	4.0 A
Insulation resistance	> 10 ⁸ Ω
Pollution degree	3
Overvoltage category	II
Insulating material group	I
EMC compliance	shielded
Shield connection	Shield on the threaded ring

Material

Contact body material	PUR black
-----------------------	-----------

Product data sheet

Automation technology - Data transmission



Product description	M8 Female cable connector, Contacts: 4, shielded, moulded on the cable, IP67, Profinet/Ethernet CAT5e, PUR, green, 4 x AWG 22, 5 m
Area	M8-D
Part no.	77 5430 0000 50704-0500

Contact material	CuZn (brass)
Contact plating	Au (gold)
Locking material	CuZn (brass)
REACH SVHC	CAS 7439-92-1 (Lead)
SCIP number	044e3ab1-9fcd-4150-8bc1-fd354c7b3073

Classifications

eCl@ss 11.1	27-06-03-11
ETIM 9.0	EC002638

Declarations of conformity

RoHS Directive	2011/65/EU (EN 50581:2012)
----------------	----------------------------

Cable data - Structure of the cable

Cable type	Profinet/Ethernet CAT5e
Cable diameter	6.7 mm
Cross section	4 x AWG 22
Sheath material	PUR
Single-lead insulation	Polyolefin
Cable color	green

Cable data - Electrical properties

Conductor resistance	55 Ω/Km (20°C)
----------------------	----------------

Cable data - Mechanical properties

Bending radius, fixed cable	≥ 5 x Ø
Bending radius, moving cable	≥ 15 x Ø
Bending cycles	2 million
Permitted acceleration	max. 2 m/s ²
Travel distance, horizontal	max. 5 m
Travel distance, vertical	max. 5 m
Travel speed	200 m/min

Cable data - Thermal properties

Temperature range cable in move from/to	-20 °C / 60 °C
Temperature range cable fixed from/to	-40 °C / 80 °C

Cable data - Other features

Halogen free	yes
--------------	-----

Product description	M8 Female cable connector, Contacts: 4, shielded, moulded on the cable, IP67, Profinet/Ethernet CAT5e, PUR, green, 4 x AWG 22, 5 m
Area	M8-D
Part no.	77 5430 0000 50704-0500

Security notices

The connectors have been developed for applications in plant engineering, control and electrical equipment construction. The user is responsible for checking whether the connectors can also be used in other areas of application.

Plug connectors with enclosure protection IP67 and IP68 are not suitable for use under water. When used outdoors, the plug connectors must be protected separately against corrosion. For further information on the IP protection classes, please refer to the "Technical Information" download centre.

To lock the cable connector with the device connector, the threaded ring is tightened "hand-tight" (approx. 40 cNm).

Product data sheet

Automation technology - Data transmission

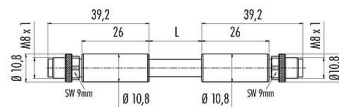


Product description	M8 Connecting cable 2 male cable connectors, Contacts: 4, shielded, moulded on the cable, IP67, Profinet/Ethernet CAT5e, PUR, green, 4 x AWG 22, 1 m
Area	M8-D
Part no.	77 5429 5429 50704-0100

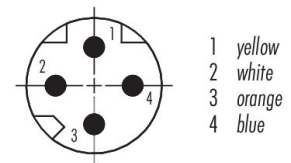
Illustration



Scale drawing



Contact arrangement (Plug-in side)



Technical data

General features

Part no.	77 5429 5429 50704-0100
Connector design	Connecting cable 2 male cable connectors
Type standard	DIN EN 61076-2-114
Cable length	1 m (Standard 1 m and 2 m. Other lengths are available on request.)
Version	Connector pin straight
Connector locking system	M8x1
Termination	moulded on the cable
Degree of protection	IP67
Cross-sectional area	0.34 mm ² / AWG 22
Temperature range from/to	-25 °C / 85 °C
Mechanical operation	> 100 Mating cycles
Weight (g)	36.00
Customs tariff number	85444290
Country of Origin	DE

Electrical parameters

Rated voltage	25 V AC (60 V DC)
Rated impulse voltage	1500 V
Rated current	4.0 A
Insulation resistance	> 10 ⁸ Ω
Pollution degree	3
Overvoltage category	II
Insulating material group	I
EMC compliance	shielded
Shield connection	Shield on the threaded ring

Material

Contact body material	PUR black
-----------------------	-----------

Product data sheet

Automation technology - Data transmission



Product description	M8 Connecting cable 2 male cable connectors, Contacts: 4, shielded, moulded on the cable, IP67, Profinet/Ethernet CAT5e, PUR, green, 4 x AWG 22, 1 m
Area	M8-D
Part no.	77 5429 5429 50704-0100

Contact material	CuZn (brass)
Contact plating	Au (gold)
Locking material	CuZn (brass)
REACH SVHC	CAS 7439-92-1 (Lead)
SCIP number	b9b7aed4-d2ae-4062-b250-9bab9f4ec2e6

Classifications

eCl@ss 11.1	27-06-03-11
ETIM 9.0	EC002638

Declarations of conformity

RoHS Directive	2011/65/EU (EN 50581:2012)
----------------	----------------------------

Cable data - Structure of the cable

Cable type	Profinet/Ethernet CAT5e
Cable diameter	4.3 mm
Cross section	4 x AWG 22
Sheath material	PUR
Single-lead insulation	Polyolefin
Cable color	green

Cable data - Electrical properties

Operating voltage	300 V
Conductor resistance	55 Ω/Km (20°C)

Cable data - Mechanical properties

Bending radius, fixed cable	≥ 5 x Ø
Bending radius, moving cable	≥ 15 x Ø
Bending cycles	2 million
Permitted acceleration	max. 2 m/s ²
Travel distance, horizontal	max. 5 m
Travel distance, vertical	max. 5 m
Travel speed	200 m/min

Cable data - Thermal properties

Temperature range cable in move from/to	-20 °C / 60 °C
Temperature range cable fixed from/to	-40 °C / 80 °C

Cable data - Other features

Halogen free	yes
--------------	-----

Product description **M8 Connecting cable 2 male cable connectors, Contacts: 4, shielded, moulded on the cable, IP67, Profinet/Ethernet CAT5e, PUR, green, 4 x AWG 22, 1 m**

Area **M8-D**
Part no. **77 5429 5429 50704-0100**

Security notices

The connectors have been developed for applications in plant engineering, control and electrical equipment construction. The user is responsible for checking whether the connectors can also be used in other areas of application.

Plug connectors with enclosure protection IP67 and IP68 are not suitable for use under water. When used outdoors, the plug connectors must be protected separately against corrosion. For further information on the IP protection classes, please refer to the "Technical Information" download centre.

To lock the cable connector with the device connector, the threaded ring is tightened "hand-tight" (approx. 40 cNm).

Product data sheet

Automation technology - Data transmission

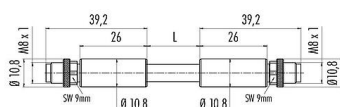


Product description	M8 Connecting cable 2 male cable connectors, Contacts: 4, shielded, moulded on the cable, IP67, Profinet/Ethernet CAT5e, PUR, green, 4 x AWG 22, 2 m
Area	M8-D
Part no.	77 5429 5429 50704-0200

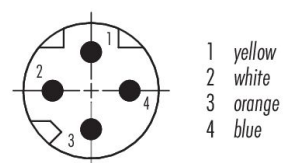
Illustration



Scale drawing



Contact arrangement (Plug-in side)



Technical data

General features

Part no.	77 5429 5429 50704-0200
Connector design	Connecting cable 2 male cable connectors
Type standard	DIN EN 61076-2-114
Cable length	2 m (Standard 1 m and 2 m. Other lengths are available on request.)
Version	Connector pin straight
Connector locking system	M8x1
Termination	moulded on the cable
Degree of protection	IP67
Cross-sectional area	0.34 mm ² / AWG 22
Temperature range from/to	-25 °C / 85 °C
Mechanical operation	> 100 Mating cycles
Weight (g)	36.00
Customs tariff number	85444290
Country of Origin	DE

Electrical parameters

Rated voltage	25 V AC (60 V DC)
Rated impulse voltage	1500 V
Rated current	4.0 A
Insulation resistance	≥ 10 ⁸ Ω
Pollution degree	3
Overvoltage category	II
Insulating material group	I
EMC compliance	shielded
Shield connection	Shield on the threaded ring

Material

Contact body material	PUR black
-----------------------	-----------

Product data sheet

Automation technology - Data transmission



Product description	M8 Connecting cable 2 male cable connectors, Contacts: 4, shielded, moulded on the cable, IP67, Profinet/Ethernet CAT5e, PUR, green, 4 x AWG 22, 2 m
Area	M8-D
Part no.	77 5429 5429 50704-0200

Contact material	CuZn (brass)
Contact plating	Au (gold)
Locking material	CuZn (brass)
REACH SVHC	CAS 7439-92-1 (Lead)
SCIP number	b9b7aed4-d2ae-4062-b250-9bab9f4ec2e6

Classifications

eCl@ss 11.1	27-06-03-11
ETIM 9.0	EC002638

Declarations of conformity

RoHS Directive	2011/65/EU (EN 50581:2012)
----------------	----------------------------

Cable data - Structure of the cable

Cable type	Profinet/Ethernet CAT5e
Cable diameter	4.3 mm
Cross section	4 x AWG 22
Sheath material	PUR
Single-lead insulation	Polyolefin
Cable color	green

Cable data - Electrical properties

Operating voltage	300 V
Conductor resistance	55 Ω/Km (20°C)

Cable data - Mechanical properties

Bending radius, fixed cable	≥ 5 x Ø
Bending radius, moving cable	≥ 15 x Ø
Bending cycles	2 million
Permitted acceleration	max. 2 m/s ²
Travel distance, horizontal	max. 5 m
Travel distance, vertical	max. 5 m
Travel speed	200 m/min

Cable data - Thermal properties

Temperature range cable in move from/to	-20 °C / 60 °C
Temperature range cable fixed from/to	-40 °C / 80 °C

Cable data - Other features

Halogen free	yes
--------------	-----

Product description	M8 Connecting cable 2 male cable connectors, Contacts: 4, shielded, moulded on the cable, IP67, Profinet/Ethernet CAT5e, PUR, green, 4 x AWG 22, 2 m
Area	M8-D
Part no.	77 5429 5429 50704-0200

Security notices

The connectors have been developed for applications in plant engineering, control and electrical equipment construction. The user is responsible for checking whether the connectors can also be used in other areas of application.

Plug connectors with enclosure protection IP67 and IP68 are not suitable for use under water. When used outdoors, the plug connectors must be protected separately against corrosion. For further information on the IP protection classes, please refer to the "Technical Information" download centre.

To lock the cable connector with the device connector, the threaded ring is tightened "hand-tight" (approx. 40 cNm).

Product data sheet

Automation technology - Data transmission

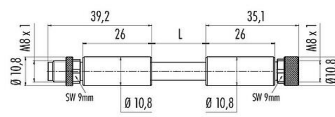


Product description	M8/M8 Connecting cable male cable connector - female cable connector, Contacts: 4, shielded, moulded on the cable, IP67, Profinet/Ethernet CAT5e, PUR, green, 4 x AWG 22, 1 m
Area	M8-D
Part no.	77 5430 5429 50704-0100

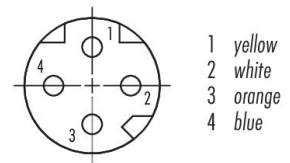
Illustration



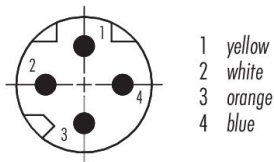
Scale drawing



Contact arrangement (Plug-in side)



Contact arrangement (Plug-in side)



Technical data

General features

Part no.	77 5430 5429 50704-0100
Connector design	Connecting cable male cable connector - female cable connector
Type standard	DIN EN 61076-2-114
Cable length	1 m (Standard 1 m and 2 m. Other lengths are available on request.)
Version	Connecting cable
Connector locking system	M8x1
Termination	moulded on the cable
Degree of protection	IP67
Cross-sectional area	0.34 mm ² / AWG 22
Temperature range from/to	-25 °C / 85 °C
Mechanical operation	> 100 Mating cycles
Weight (g)	79.00
Customs tariff number	85444290

Product data sheet

Automation technology - Data transmission



Product description	M8/M8 Connecting cable male cable connector - female cable connector, Contacts: 4, shielded, moulded on the cable, IP67, Profinet/Ethernet CAT5e, PUR, green, 4 x AWG 22, 1 m
Area	M8-D
Part no.	77 5430 5429 50704-0100

Country of Origin DE

Electrical parameters

Rated voltage	63 V DC
Rated impulse voltage	1500 V
Rated current	4.0 A
Insulation resistance	> 10 ⁸ Ω
Pollution degree	3
Overvoltage category	II
Insulating material group	I
EMC compliance	shielded
Shield connection	Shield on the threaded ring

Material

Contact body material	PUR black
Contact material	CuZn (brass)
Contact plating	Au (gold)
Locking material	CuZn (brass)
REACH SVHC	CAS 7439-92-1 (Lead)
SCIP number	c4e816f8-2926-4825-b845-5ec3808e13c8

Classifications

eCl@ss 11.1	27-06-03-11
ETIM 9.0	EC002638

Declarations of conformity

RoHS Directive	2011/65/EU (EN 50581:2012)
----------------	----------------------------

Cable data - Structure of the cable

Cable type	Profinet/Ethernet CAT5e
Cable diameter	4.3 mm
Cross section	4 x AWG 22
Sheath material	PUR
Single-lead insulation	Polyolefin
Cable color	green

Cable data - Electrical properties

Operating voltage	300 V
Conductor resistance	55 Ω/Km (20°C)

Cable data - Mechanical properties

Bending radius, fixed cable	≥ 5 x Ø
Bending radius, moving cable	≥ 15 x Ø
Bending cycles	2 million
Permitted acceleration	max. 2 m/s ²

Product data sheet

Automation technology - Data transmission



Product description **M8/M8 Connecting cable male cable connector - female cable connector, Contacts: 4, shielded, moulded on the cable, IP67, Profinet/Ethernet CAT5e, PUR, green, 4 x AWG 22, 1 m**

Area **M8-D**
Part no. **77 5430 5429 50704-0100**

Travel distance, horizontal	max. 5 m
Travel distance, vertical	max. 5 m
Travel speed	200 m/min

Cable data - Thermal properties

Temperature range cable in move from/to	-20 °C / 60 °C
Temperature range cable fixed from/to	-40 °C / 80 °C

Cable data - Other features

Halogen free	yes
--------------	-----

Product description **M8/M8 Connecting cable male cable connector - female cable connector, Contacts: 4, shielded, moulded on the cable, IP67, Profinet/Ethernet CAT5e, PUR, green, 4 x AWG 22, 1 m**

Area **M8-D**
Part no. **77 5430 5429 50704-0100**

Security notices

The connectors have been developed for applications in plant engineering, control and electrical equipment construction. The user is responsible for checking whether the connectors can also be used in other areas of application.

Plug connectors with enclosure protection IP67 and IP68 are not suitable for use under water. When used outdoors, the plug connectors must be protected separately against corrosion. For further information on the IP protection classes, please refer to the "Technical Information" download centre.

To lock the cable connector with the device connector, the threaded ring is tightened "hand-tight" (approx. 40 cNm).

Product data sheet

Automation technology - Data transmission

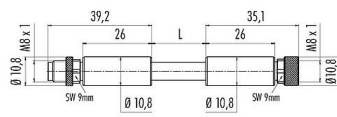


Product description	M8/M8 Connecting cable male cable connector - female cable connector, Contacts: 4, shielded, moulded on the cable, IP67, Profinet/Ethernet CAT5e, PUR, green, 4 x AWG 22, 2 m
Area	M8-D
Part no.	77 5430 5429 50704-0200

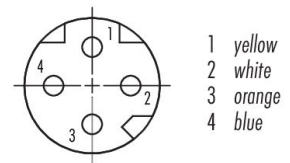
Illustration



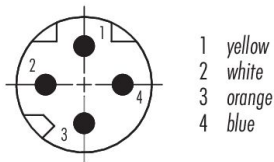
Scale drawing



Contact arrangement (Plug-in side)



Contact arrangement (Plug-in side)



Technical data

General features

Part no.	77 5430 5429 50704-0200
Connector design	Connecting cable male cable connector - female cable connector
Type standard	DIN EN 61076-2-114
Cable length	2 m (Standard 1 m and 2 m. Other lengths are available on request.)
Version	Connecting cable
Connector locking system	M8x1
Termination	moulded on the cable
Degree of protection	IP67
Cross-sectional area	0.34 mm ² / AWG 22
Temperature range from/to	-25 °C / 85 °C
Mechanical operation	> 100 Mating cycles
Weight (g)	79.00
Customs tariff number	85444290

Product data sheet

Automation technology - Data transmission



Product description	M8/M8 Connecting cable male cable connector - female cable connector, Contacts: 4, shielded, moulded on the cable, IP67, Profinet/Ethernet CAT5e, PUR, green, 4 x AWG 22, 2 m
Area	M8-D
Part no.	77 5430 5429 50704-0200

Country of Origin DE

Electrical parameters

Rated voltage	63 V DC
Rated impulse voltage	1500 V
Rated current	4.0 A
Insulation resistance	> 10 ⁸ Ω
Pollution degree	3
Overvoltage category	II
Insulating material group	I
EMC compliance	shielded
Shield connection	Shield on the threaded ring

Material

Contact body material	PUR black
Contact material	CuZn (brass)
Contact plating	Au (gold)
Locking material	CuZn (brass)
REACH SVHC	CAS 7439-92-1 (Lead)
SCIP number	c4e816f8-2926-4825-b845-5ec3808e13c8

Classifications

eCl@ss 11.1	27-06-03-11
ETIM 9.0	EC002638

Declarations of conformity

RoHS Directive	2011/65/EU (EN 50581:2012)
----------------	----------------------------

Cable data - Structure of the cable

Cable type	Profinet/Ethernet CAT5e
Cable diameter	4.3 mm
Cross section	4 x AWG 22
Sheath material	PUR
Single-lead insulation	Polyolefin
Cable color	green

Cable data - Electrical properties

Operating voltage	300 V
Conductor resistance	55 Ω/Km (20°C)

Cable data - Mechanical properties

Bending radius, fixed cable	≥ 5 x Ø
Bending radius, moving cable	≥ 15 x Ø
Bending cycles	2 million
Permitted acceleration	max. 2 m/s ²

Product data sheet

Automation technology - Data transmission



Product description **M8/M8 Connecting cable male cable connector - female cable connector, Contacts: 4, shielded, moulded on the cable, IP67, Profinet/Ethernet CAT5e, PUR, green, 4 x AWG 22, 2 m**

Area **M8-D**
Part no. **77 5430 5429 50704-0200**

Travel distance, horizontal	max. 5 m
Travel distance, vertical	max. 5 m
Travel speed	200 m/min

Cable data - Thermal properties

Temperature range cable in move from/to	-20 °C / 60 °C
Temperature range cable fixed from/to	-40 °C / 80 °C

Cable data - Other features

Halogen free	yes
--------------	-----

Product description **M8/M8 Connecting cable male cable connector - female cable connector, Contacts: 4, shielded, moulded on the cable, IP67, Profinet/Ethernet CAT5e, PUR, green, 4 x AWG 22, 2 m**

Area **M8-D**
Part no. **77 5430 5429 50704-0200**

Security notices

The connectors have been developed for applications in plant engineering, control and electrical equipment construction. The user is responsible for checking whether the connectors can also be used in other areas of application.

Plug connectors with enclosure protection IP67 and IP68 are not suitable for use under water. When used outdoors, the plug connectors must be protected separately against corrosion. For further information on the IP protection classes, please refer to the "Technical Information" download centre.

To lock the cable connector with the device connector, the threaded ring is tightened "hand-tight" (approx. 40 cNm).