


Industrial Connectors



Introduction

When searching for connectivity to be used on rugged applications, people are often overwhelmed by the amount of choice they are faced with and have the tough task of filtering through pages and pages of data on websites and in catalogues.

To aid this gruelling process and to simplify this task we have put together the following pages which showcase some of the more popular ranges from the industry's leading manufacturers, allowing comparison of their technical characteristics in an easy to use format.

About Us

We are a family-owned specialist distributor of industrial connectors and components, and pride ourselves on providing a high quality service to both new and existing customers.

Founded in 1983, we have built up a strong reputation within our industry, becoming a celebrated organisation and a go-to source for industrial connectivity for use in a wide variety of applications.

Northern Connectors Ltd.

T +44 (0)1744 815001

E sales@northern-connectors.co.uk

www.northern-connectors.co.uk

Why Choose Us

At Northern Connectors we pride ourselves on excellent service and our dedicated specialists are with you every step of the way throughout the buying process.

If you need any more encouragement, take a look at just some of the reasons to choose Northern Connectors as a supplier:

- We are a specialist distributor, which means we offer an unrivalled experience in finding the right solutions for your application.
- We have in-house technical product specialists and full manufacturers support with the ability to offer part number identification and cross referencing.
- Our team of Business Development Managers are on hand to visit customers, offering face-to-face advice and support regarding product designs.
- We can facilitate your Kanban, Just-in-Time requirements and schedule orders over a 12 month period, supporting contracts that require that extra level of support and taking advantage of secure pricing levels and stock availability.
- We offer a 48-hour dispatch service for the Souriau UT0-UT0W-UTS range of industrial connector planforms that we assemble from stocked piece-parts.
- Next day delivery is standard on stocked items for orders received before 3.30pm Monday to Thursday and prior to 2.30pm Fridays.
- We have a low minimum order value of £10 for UK deliveries and £25 on export orders.
- We are an ISO 9001-2008 registered company.
- We accept all major debit and credit cards.

Index

Binder	04 - 05
Conec	06 - 07
HARTING	08 - 09
Hirschmann	10 - 11
Hummel	12 - 13
Lumberg Automation	16 - 17
Mennekes	18 - 19
PMA	20 - 21
Radiall	22 - 23
Souriau	24 - 25
Weidmüller	26

“OUR MISSION IS TO
PROVIDE QUALITY
PRODUCTS,
TECHNICAL EXPERTISE
AND EXCELLENT
CUSTOMER SERVICE”



Binder are a leading family owned German manufacturer who specialise in small, quality, robust circular connectors which are primarily targeted at measurement and automation applications.

The fantastic range of connector series offer pin counts ranging from 2 to 24 with various locking systems including screw, bayonet and snap-in with crimp, screw, solder and clamp termination methods.

Snap-In

Series No.	620, 720
No. of Contacts	3-12
Locking Mechanism	Snap-In
Termination	Solder Bucket, Dip Solder
Wire Gauge Max.	0.75mm ²
Cable Diameter Range	2.5-8mm
Voltage	60-250V
Current	1-7A
Ingress Protection	IP67
Moulded Cable Opt.	Yes



M8

Series No.	768
No. of Contacts	3-8
Locking Mechanism	Screw
Termination	Solder Bucket, Dip Solder, Screw
Wire Gauge Max.	0.5mm ²
Cable Diameter Range	3-5mm
Voltage	30-60V
Current	1.5-4A
Ingress Protection	IP65, IP67
Moulded Cable Opt.	Yes



M9

Series No.	711, 712
No. of Contacts	2-8
Locking Mechanism	Screw
Termination	Solder Bucket, Dip Solder
Wire Gauge Max.	0.25mm ²
Cable Diameter Range	3-5.5mm
Voltage	125V
Current	1-4A
Ingress Protection	IP40, IP67
Moulded Cable Opt.	Yes



M12

Series No.	713, 715, 825, 814, 813, 815
No. of Contacts	3-12
Locking Mechanism	Screw
Termination	Solder Bucket, Dip Solder, Screw, Wire Clamp, IDT
Wire Gauge Max.	1.5mm ²
Cable Diameter Range	2.5-10mm
Voltage	30-630V
Current	1-12A
Ingress Protection	IP67
Moulded Cable Opt.	Yes

The various M12 connector series have coding on the mating face to avoid the mismatching of one series with another. The coding systems used are referred to as A, B, D, S, T, US and X code. Please contact us for more information.



M16

Series No.	581, 680, 682, 423, 723
No. of Contacts	2-24
Locking Mechanism	Screw
Termination	Solder Bucket, Dip Solder, Screw, Crimp
Wire Gauge Max.	0.75mm ²
Cable Diameter Range	3-10mm
Voltage	60-250V
Current	1-7A
Ingress Protection	IP40, IP67
Moulded Cable Opt.	Yes



Bayonet (NCC)

Series No.	770
No. of Contacts	8
Locking Mechanism	Bayonet
Termination	Solder Bucket, Dip Solder
Wire Gauge Max.	0.25mm ²
Cable Diameter Range	2.5-8mm
Voltage	175V
Current	2A
Ingress Protection	IP67
Moulded Cable Opt.	No



RD24

Series No.	692, 693
No. of Contacts	4 & 7
Locking Mechanism	Screw
Termination	Screw, Solder, Crimp
Wire Gauge Max.	2.5mm ²
Cable Diameter Range	6-14mm
Voltage	250-600V
Current	8-16A
Ingress Protection	IP67
Moulded Cable Opt.	Yes



RD30

Series No.	694
No. of Contacts	5-24
Locking Mechanism	Screw
Termination	Screw, Solder
Wire Gauge Max.	2.5mm ²
Cable Diameter Range	10-18mm
Voltage	125-400V
Current	3-20A
Ingress Protection	IP65
Moulded Cable Opt.	No



repu
inder



Conec® are a leading German manufacturer who are renowned for their fantastic range of D-sub connectors and accessories. Their extensive range covers Standard, High Density, Combination & Filtered. In addition to the huge choice on these industry standard connectors each series also has IP67 rated versions for use in harsh environments.

Northern Connectors have been the key supplier of Conec® products in the UK for a number of years and stock many items available for next day delivery.

D-Sub Standard

No. of Contacts	9-50
Locking Mechanism	Hood with Screws
Termination	Solder Cup, Dip Solder, Press-Fit, Wire Wrap, IDC, Crimp
Wire Gauge Max.	20 AWG
Voltage	Available on Request
Current	5-7A
Ingress Protection	IP20



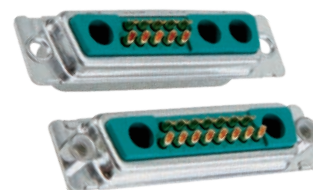
D-Sub High Density

No. of Contacts	15-78
Locking Mechanism	Hood with Screws
Termination	Solder Cup, Dip Solder, Press-Fit, Crimp
Wire Gauge Max.	22 AWG
Voltage	Available on Request
Current	2.5-3A
Ingress Protection	IP20



D-Sub Combination

No. of Contacts	2-47
Locking Mechanism	Hood with Screws
Termination	Solder Cup, Dip Solder, Press-Fit, Wire Wrap, Crimp, Screw, Press-Fit
Wire Gauge Max.	8 AWG
Voltage	Available on Request
Current	2.5-40A
Ingress Protection	IP20



Waterproof D-Sub Standard

No. of Contacts	9-50
Locking Mechanism	Hood with Screws
Termination	Solder Cup, Dip Solder
Wire Gauge Max.	20 AWG
Voltage	Available on Request
Current	5-7A
Ingress Protection	IP67



Waterproof D-Sub High Density

No. of Contacts	15-78
Locking Mechanism	Hood with Screws
Wire Gauge Max.	22 AWG
Voltage	Available on Request
Current	2.5-3A
Ingress Protection	IP67



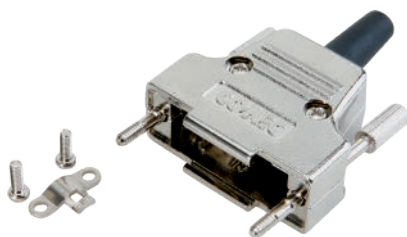
Waterproof D-Sub Combination

No. of Contacts	2-47
Locking Mechanism	Hood with Screws
Termination	Solder Cup, Dip Solder, Crimp
Wire Gauge Max.	8 AWG
Voltage	Available on Request
Current	2.5-40A
Ingress Protection	IP67



D-Sub Hoods

Sizes	9-50
Entry Style	Straight, Side, Variable
Shell Material	Metal, Plastic, Metalized Plastic
Fastening	Short Screws, Jack Screws, Slide Lock
Assembly	Screw, Press Fit, Hinge, Snap lock
Ingress Protection	IP20, IP67



In addition to Conec's extensive range of D-Sub connector hoods they also offer a comprehensive choice of accessories including protection caps and screw locks. Please contact us for more information.

RJ45 Indust. Ethernet Connectors

Interface	RJ45 - Cat. 5e / Cat. 6A
Locking Mechanism	Bayonet, Screw, Lever
Termination	Screw, Solder, IDC, Crimp
Housing Material	Metal, Plastic, Metalized Plastic
Max. Panel Thickness	3.2mm
Ingress Protection	IP20, IP67
Moulded Cable Opt.	Yes
Stand. Cable Lengths	2m, 4m, 5m





HARTING® are a family owned German manufacturer of a wide range of Industrial connectors and components and have built a strong reputation for being at the forefront of interconnect technology for many years.

Although predominantly recognised for their fantastic range of German engineered rugged rectangular solid insert and modular systems, HARTING® also boast a huge range of complimentary connector systems including D-Sub and RJ45.

Han

No. of Contacts	4-216
Locking Mechanism	Lever, Toggle, Screw
Termination	Crimp, Screw, Quick-Lock, Axial Screw, Cage Clamp, IDC
Wire Gauge Max.	35mm ²
Cable Diameter Range	5-38mm
Voltage	50-830V
Current	10-100A
Ingress Protection	IP44, IP65, IP67, IP68, IP69K



Han-Eco

No. of Contacts	2-175
Locking Mechanism	Lever
Termination	Crimp, Quick-Lock, Axial Screw, Cage Clamp
Wire Gauge Max.	38mm ²
Cable Diameter Range	13-28mm
Voltage	50-5000V
Current	4-100A
Ingress Protection	IP65



Han-Modular

No. of Contacts	1-300
Locking Mechanism	Lever, Toggles, Screws
Termination	Crimp, Quick-Lock, Axial Screw, Cage Clamp
Wire Gauge Max.	70mm ²
Cable Diameter Range	5-38mm
Voltage	50-5000V
Current	4-200A
Ingress Protection	IP44, IP65, IP67, IP68, IP69K



D-Sub Standard

No. of Contacts	9-50
Locking Mechanism	Hood with Screws
Termination	Crimp, Solder Bucket, Dip Solder
Wire Gauge Max.	0.56mm ²
Voltage	Available on Request
Current	2-7.5A
Ingress Protection	IP20, 1P67



D-Sub High Density

No. of Contacts	15-78
Locking Mechanism	Hood with Screws
Termination	Crimp, Solder Bucket, Dip Solder
Wire Gauge Max.	0.22mm ²
Voltage	Available on Request
Current	2A max.
Ingress Protection	IP20, 1P67



D-Sub Combination

No. of Contacts	2-43
Locking Mechanism	Hood with Screws
Termination	Crimp, Solder Bucket, Dip Solder
Wire Gauge Max.	8.4mm ²
Voltage	Available on Request
Current	5-40A
Ingress Protection	IP20, 1P67



Industrial RJ45 Ethernet

No. of Contacts	4 & 8
Locking Mechanism	Lever, Screw, Push-Pull
Termination	IDC
Transmission Cat.	Cat 5, Class D/Cat 6Ea
Transmission Rate	10/100Mbit/s - 1/10 Gbit/s
Stand. Cable Lengths	0.5-20m
Ingress Protection	IP20, IP65, IP67



Har-Port Couplers

Type	USB (2.0 A&B), RJ45
Locking Mechanism	Lever
Panel Cut-Out	Standard 22mm
Panel Thickness	1-5mm
Stand. Cable Lengths	0.2-10m
Ingress Protection	IP20, IP65, IP67



[®]
HARTING
Pushing Performance



HIRSCHMANN

A **BELDEN** BRAND

Hirschmann™ have a strong reputation for highly reliable connector and wiring solutions for use in areas of automation, machine building, plant engineering and renewable energy.

Northern Connectors have represented Hirschmann™ in the UK for over 15 years. Combined with our fellow Belden partners Lumberg Automation™ we have a huge portfolio of connector solutions and have earned Gold Preferred Distribution Partner status.

CA

No. of Contacts	4 & 7
Locking Mechanism	Screw
Termination	Screw, Solder Bucket
Wire Gauge Max.	2.5mm ²
Cable Diameter Range	6-12mm
Voltage	250-400V
Current	10-16A
Ingress Protection	IP67
Moulded Cable Opt.	No



CM

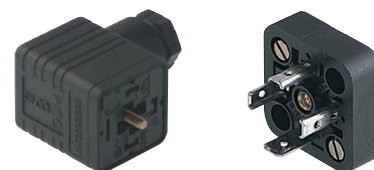
No. of Contacts	4-17
Locking Mechanism	Screw
Termination	Solder Bucket
Wire Gauge Max.	1.5mm ²
Cable Diameter Range	8-14mm
Voltage	50V
Current	2-10A
Ingress Protection	IP67
Moulded Cable Opt.	Yes



GDM (Valve Connectors)

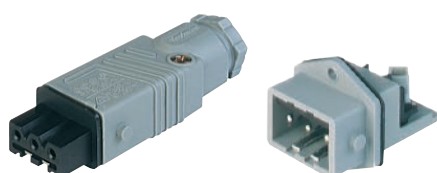
No. of Contacts	3 & 4
Locking Mechanism	Central Screw
Termination	Screw, Crimp, Solder Bucket
Wire Gauge Max.	2.5mm ²
Cable Diameter Range	4.5-14mm
Voltage	24-400V
Current	1-16A
Ingress Protection	IP65
Moulded Cable Opt.	Yes

The GDM series has 3 shell sizes – A, B, C. Please contact us for more information on each type.



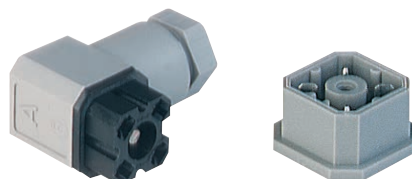
ST

No. of Contacts	3-6
Locking Mechanism	Lever
Termination	Screw, Crimp
Wire Gauge Max.	1.5mm ²
Cable Diameter Range	4-10mm
Voltage	250-400V
Current	6-16A
Ingress Protection	IP54
Moulded Cable Opt.	Yes



G

No. of Contacts	2-7
Locking Mechanism	Central Screw
Termination	Solder Bucket, Screw, Solder Tabs, Crimp
Wire Gauge Max.	1mm ²
Cable Diameter Range	4-10mm
Voltage	50-250V
Current	6-10A
Ingress Protection	IP65
Moulded Cable Opt.	Yes



NR

No. of Contacts	7 & 12
Locking Mechanism	Screw
Termination	Crimp, Screw, Solder Bucket
Wire Gauge Max.	1.5mm ²
Cable Diameter Range	7-14mm
Voltage	25-250V
Current	5-10A
Ingress Protection	IP65
Moulded Cable Opt.	No



M8 (Field Attachable)

No. of Contacts	3 & 4
Locking Mechanism	Screw
Termination	Piercing Technology
Wire Gauge Max.	0.34mm ²
Cable Diameter Range	4-5mm
Voltage	20-60V
Current	3A
Ingress Protection	IP67
Moulded Cable Opt.	No



M12 (Field Attachable)

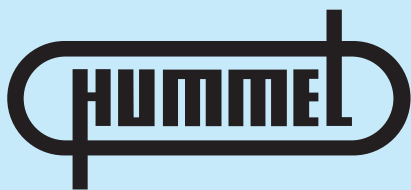
No. of Contacts	3-5
Locking Mechanism	Screw
Termination	Screw
Wire Gauge Max.	0.75mm ²
Cable Diameter Range	4-8mm
Voltage	50-250V
Current	4A
Ingress Protection	IP67
Moulded Cable Opt.	No



HIRSCHMANN

A BELDEN BRAND





Hummel is an independent, family-owned company with a clear commitment to Germany as a location for industrial production.

Hummel have become renowned for their extensive range of high quality rugged cable glands for use in industrial environments including those under threat of explosion with the EXIOS range for use in hazardous areas.

To compliment Hummel's huge range of cable glands and accessories they also have a great range of M16 and M23 industrial circular connectors.

M16

No. of Contacts	3-18
Locking Mechanism	Screw
Termination	Crimp, Dip Solder
Wire Gauge Max.	2.5mm ²
Cable Diameter Range	2-11mm
Voltage	24-630V
Current	3-20A
Ingress Protection	IP67, IP69K



M23 Signal

No. of Contacts	6-19
Locking Mechanism	Screw
Termination	Crimp, Solder, Dip-Solder
Wire Gauge Max.	2.5mm ²
Cable Diameter Range	3-17mm
Voltage	100-300V
Current	8-20A
Ingress Protection	IP67, IP69K



M23 Power

No. of Contacts	6-10
Locking Mechanism	Screw
Termination	Crimp
Wire Gauge Max.	4mm ²
Cable Diameter Range	7-17mm
Voltage	160-630V
Current	8-28A
Ingress Protection	IP67, IP69K



M23 RJ45

No. of Contacts	4-8
Locking Mechanism	Screw
Housing	Brass Alloy, Die Cast
Housing Surface	Nickel Plated
Cable Diameter Range	3-17mm
Ingress Protection	IP67, IP69k



Plastic Cable Glands

Housing Material	Polyamide V0, PVDF V0
Temperature Rating	-40°C to +150°C
Colours	Grey, Black, Blue, Nature
Thread Types	Metric, PG, NPT
Cable Diameter Range	2-44mm
Ingress Protection	IP68, IP69K (with optional O-ring)



Metal Cable Glands

Housing Material	Nickel Plated Brass, Stainless Steel (INOX)
Temperature Rating	-40°C to +150°C
Thread Types	Metric, PG, NPT
Thread Length	5-19mm
Cable Diameter Range	2-44mm
Ingress Protection	IP68, IP69K



EMC Cable Glands

Housing Material	Nickel Plated Brass
Temperature Rating	-40°C to +150°C
Clamping Insert	Polyamide, Metalized Polyamide
Thread Types	Metric, PG, NPT
Cable Diameter Range	2-44mm
Ingress Protection	IP68, IP69K

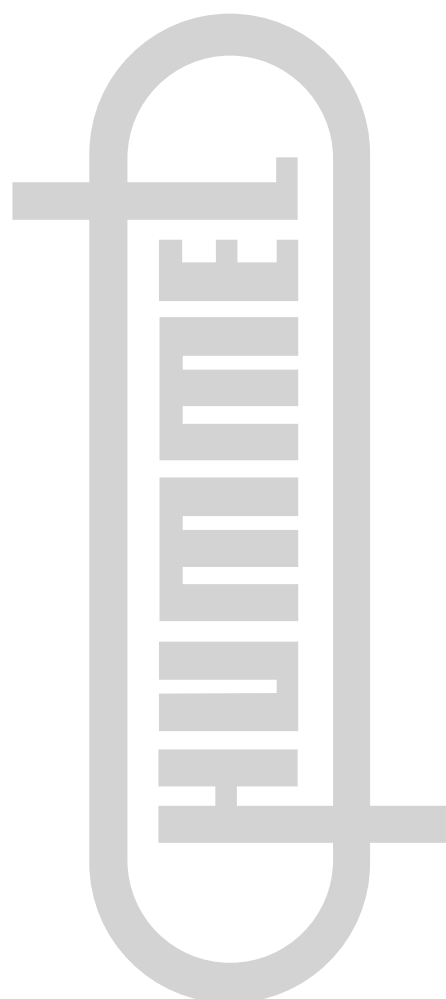


EXIOS Cable Glands for Hazardous Areas

Housing Material	Brass, Nickel Plated Brass
Temperature Rating	-60°C to +105°C
Construction Types	Standard Dual Sealed, Barrier, A2F
Areas	Ex-e, Ex-d, Ex-ta
Zones	1, 2, 20, 21, 22
Thread Types	Metric, NPT
Cable Diameter Range	6-78mm
Ingress Protection	IP66, IP67, IP68



In addition to Hummel's vast range of industrial connectors and cable protection systems they also provide a substantial variety of accessories. Please contact us for more information.



Smaller, Lighter, Zero Halogen



EcoGen™ Benefits Compared to PVC:

EcoCable® Control Cable

- Up to 47% smaller
- Up to 65% lighter
- 87% lower outgassing

EcoFlex® Control Cable

- Up to 32% smaller
- Up to 55% lighter
- 91% lower outgassing
- 8x bend radius
- Over 1 million flex cycles



100% Recyclable and PVC Free



EcoCable® Mini 300 V Cable

Up to 32% smaller
Up to 44% lighter
92% lower outgassing

EcoWire® Hook-Up Wire

Up to 32% smaller
Up to 44% lighter

EcoWire® Plus adds
exceptional resistance to
chemicals, solvents, and fuels



AlphaWire

Cables you trust. Service you deserve.



Automation technologies make things move. They sense, they control, and they inspect.

Lumberg Automation™ have been recognised for their quality connectors and wiring components for all areas of industrial automation technology for over 30 years and combined with our fellow Belden partners Hirschmann have an in depth portfolio of solutions.

Northern Connectors have represented Lumberg Automation™ in the UK for over 10 years and have earned Gold Preferred Distribution Partner status. We carry an in depth range of connectors and accessories available for next day delivery.

M8

No. of Contacts	3 & 4
Locking Mechanism	Screw
Termination	Solder, Screw, Dip-Solder
Wire Gauge Max.	0.50mm ²
Cable Diameter Range	3.5-5mm
Voltage	30-60V
Current	4A
Ingress Protection	IP67
Moulded Cable Opt.	Yes



M12

No. of Contacts	3-8
Locking Mechanism	Screw
Termination	Screw, Spring
Wire Gauge Max.	0.75mm ²
Cable Diameter Range	3-9mm
Voltage	30-240V
Current	2-4A
Ingress Protection	IP67
Moulded Cable Opt.	Yes

The various M12 connector series have coding on the mating face to avoid the mismatching of one series with another. The coding systems used are referred to as A, B, C and D code. Please contact us for more information.



M23

No. of Contacts	12-19
Locking Mechanism	Screw
Termination	Solder Cup, Screw
Wire Gauge Max.	2.5mm ²
Cable Diameter Range	6-14.5mm
Voltage	150-300V
Current	8-20A
Ingress Protection	IP67
Moulded Cable Opt.	Yes



7/8"

No. of Contacts	3-5
Locking Mechanism	Screw
Termination	Screw
Wire Gauge Max.	1mm ²
Cable Diameter Range	6-14mm
Voltage	240V
Current	9-12A
Ingress Protection	IP67
Moulded Cable Opt.	Yes



Actuator/Sensor Cordsets

No. of Contacts	3 & 4
Locking Mechanism	Central Screw
Types	A, B, C
Voltage	24-240V
Current	4A
Ingress Protection	IP67
Stand. Cable Lengths	2m, 5m, 10m



Two Way Distributors/T-Connectors

No. of Contacts	2-19
Locking Mechanism	Screw
Orientation	Straight, Angled
Voltage	60-250V
Current	1-12A
Ingress Protection	IP67, IP68, IP69K



Passive Distribution Boxes (ASB Series)

Environmental Temp.	-40°C to +80°C
Housing Material	Die-Cast Zinc, PBT, TPU, or Stainless Steel
Ingress Protection	IP67, IP69K
Voltage	10-30V DC
Current	1.5-4A per Port & 12A per Module
Module Construction	M8 Pluggable: 4, 6, 8, 10 Way - M8 with Cable: 4, 6, 8, 10, 12 Way - M12: 4, 6, 8 Way Distributor



Active I/O Modules & Stand Alone Designs (Lion Series)

Environmental Temp.	-25°C to +60°C
Housing Material	Die-Cast Zinc, V4A, PBT or PUR
Ingress Protection	IP67, IP68, IP69K
Voltage	18-30V DC
Current	0.5-2A per Channel and 12A per Module
Protocols	Profinet, EtherNet/IP, Profibus, DeviceNet, CANopen, Interbus, ASi



lumberg automation

A BELDEN BRAND



MENNEKES®

Plugs for the world

Mennekes® are the leading German manufacturer of heavy duty industrial cable plugs and sockets.

For over 75 years Mennekes® have focused their efforts on maintaining their reputation for high quality, reliability, safety, innovation and sustainability.

Mennekes® have a clear identity and their connectors, plugs and combination units are used worldwide in areas including sports stadia, marine & offshore, factories, transportation, broadcasting and agriculture.

Connectors

No. of Contacts	3-5
Locking Mechanism	Push-fit
Termination	Screw, IDC
Wire Gauge Max.	50mm²
Cable Diameter Range	14.5-49mm
Voltage	110-500V
Current	16-125A
Ingress Protection	IP44, IP67



Plugs

No. of Contacts	3-5
Locking Mechanism	Push-fit
Termination	Screw, IDC
Wire Gauge Max.	50mm²
Cable Diameter Range	14.5-49mm
Voltage	110-500V
Current	16-125A
Ingress Protection	IP44, IP67



Panel Mounted Inlets

No. of Contacts	3-5
Locking Mechanism	Push-fit
Termination	Screw
Wire Gauge Max.	70mm²
Voltage	110-500V
Current	16-125A
Ingress Protection	IP44, IP67



Panel Mounted Sockets

No. of Contacts	3-5
Locking Mechanism	Push-fit
Termination	Screw, Screwless Twincontact
Wire Gauge Max.	70mm²
Voltage	110-500V
Current	16-125A
Ingress Protection	IP44, IP67



Wall Mounted Inlets

No. of Contacts	3-5
Locking Mechanism	Push-fit
Termination	Screw
Wire Gauge Max.	35mm²
Voltage	110-500V
Current	16-125A
Ingress Protection	IP44, IP67



Wall Mounted Sockets

No. of Contacts	3-5
Locking Mechanism	Push-fit
Termination	Screw, Screwless Twincontact
Wire Gauge Max.	70mm²
Voltage	110-500V
Current	16-125A
Ingress Protection	IP44, IP67



Combination Units

Enclosure Materials	Amaplast, Amelan (Chemical Resistant)
Ingress Protection	IP44, IP67
Colour	Black & Grey
International Stand.	British, French/Belgian, Danish, Swiss, NEMA (USA & Canada)
Equipped with	CEE sockets from 16A, 3p up to 63A, 5p, grounding- type sockets in acc. with many national standards, DUO sockets switched and interlocked from 16A, 3p up to 32A, 5p as well as fuse elements.



Unique Advantages

- 1 Lifiable DIN rails and a large, smooth wiring space significantly ease the insertion as well as connection of large cables.
- 2 Shorter installation times with the new, user-friendly external fixing.
- 3 Hinged cover, which opens to one side, eases connection work.
- 4 Ready for application. All combinations are pre-wired for installation and tested for electric safety and quality.

MENNENKES®

Plugs for the world

PMA

Cable Protection

PMA have been developing and producing top-quality cable protection systems in Switzerland since 1975.

The high-quality Swiss products have rapidly earned PMA an excellent reputation and established them as the market leader. PMA's range of more than 6,500 products gives customers the protection they need in railway, mechanical engineering and shipbuilding applications worldwide.

PMA products are also the solution of choice in automation, building installations and other projects where power and data cables require dependable protection.

Conduits

A large range of very different mono and multilayer conduit types which fulfil high technical demands. Conduit sizes range from 4.5mm to 125mm diameters, from lightweight to heavyweight and from pliable to highly flexible. Many conduits are specially approved, e.g. CSA, UL Recognition, NFR, SNCF, DB etc.



Divisible System

The ideal solution for repairs, retrofit and pre-loomed applications. The main characteristics of these new products are: Divisible, one-piece design, IP54 protection, simple, fast, for retrofit and pre-loomed applications, modern and functional design, excellent price/performance ratio.



PMAFIX

This product line offers solutions that meet the highest expectations: IP54 – IP68 + IP69K. It is based on a perfected system technology that makes installation easy. You can choose from a very large, varied range of connectors and conduit which have demonstrated their dependability in all types of applications for more than 30 years.



PMAFIX Pro

The extremely successful and technically appreciated PMAFIX System has been developed further to create the PMAFIX Pro product range. The new generation fittings are the product of experience gained over many years in the most varied application areas. The PMAFIX Pro has two components, an outer body and an inner sealing element. The sealing element functions both as a seal and as a locking mechanism providing all ingress protection grades up to IP68 and IP69K even in applications where there is long term continuous movement. PMAFIX Pro is manufactured by using multiple component injection moulding process.



Smart Line

One-piece design, IP66 protection and simple, fast installation are the outstanding features of the Smart Line. Other characteristics including a modern, functional design and an excellent price/performance ratio make this product line a very attractive solution.



EMC System

This product line contains metal braids made of tin-plated copper and hybrid braids made of tin-plated copper wires mixed with polyester monofilament. Fittings are made of nickel plated aluminium or nickel plated brass. The braids are designed to provide protection against electromagnetic interferences.

The fittings guarantee excellent clamping of the braid and good contact between the shielding braid and the conduit system.



Ex-System

This product line contains products made of specially modified, electrostatic load discharging polyamide material for use in explosions endangered zones 1/2 (gas) and 21/22 (dust) according to ATEX 137. The system technology is based on the PMA protection system for highest requirements proven for more than 30 years.



Accessories

PMA offers a vast array of practical accessories in order to complete the PMA cable protection system.

Lock nuts produced from polyamide or metal, thread reducers and enlargers, conduit adapters, swivel adapters as well as different mounting clips for conduits.

All products will help to create the PMA line even more flexible and application friendly.



PMA
Cable Protection



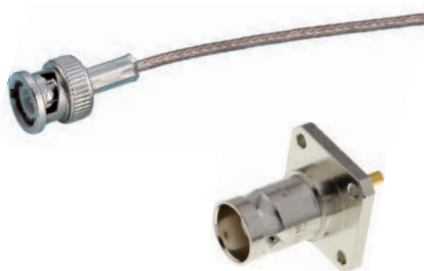
Radial™ was founded in 1952 as a family owned company making coaxial plugs for the television industry.

Today, Radial™ is an international and global manufacturer of interconnect components including RF coaxial connectors and cable assemblies, antennas, fibre optic and microwave components, and multipin connectors.

Radial™ serves the Aerospace, Automotive, Defence, Industrial, Medical, Space, and Telecommunication industries.

BNC / BNC HD TV

Prefix	R140, R141, R142
Size	Standard
Coupling System	Bayonet
Min. Mating Cycles	100/500
Main Cable Types	RG178, RG316, RG174, RG58, RG59, RG213, RG214, Semi-Rigid & Conformable
Impedance	50, 75 ohms



MCX

Prefix	R113, R213
Size	Miniature
Coupling System	Snap-on
Min. Mating Cycles	500
Main Cable Types	RG178, RG316, RG174, Semi-Rigid & Conformable
Impedance	50, 75 ohms



N

Prefix	R161, R162, R163
Size	Large
Coupling System	Screw-on
Min. Mating Cycles	500
Main Cable Types	RG58, RG59, RG213, RG214, Semi-Rigid & Conformable, Corrugated
Impedance	50, 75 ohms



SMA / SMA COM

Prefix	R124, R125, R126
Size	Miniature
Coupling System	Screw-on
Min. Mating Cycles	500
Main Cable Types	RG178, RG316, RG174, RG58, RG59, Semi-Rigid & Conformable
Impedance	50 ohms



SMB / SLB

Prefix	R114, R115, R116, 3000
Size	Miniature
Coupling System	Snap-on, Slide-on
Min. Mating Cycles	500
Main Cable Types	RG178, RG316, RG174, Semi-Rigid & Conformable
Impedance	50 ohms



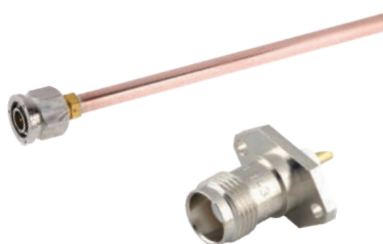
SMC

Prefix	R112, R212
Size	Miniature
Coupling System	Screw-on
Min. Mating Cycles	500
Main Cable Types	RG178, RG316, RG174, Semi-Rigid & Conformable
Impedance	50 ohms



TNC / TNC 18

Prefix	R143, R144
Size	Standard
Coupling System	Screw-on
Min. Mating Cycles	100/500
Main Cable Types	RG316, RG174, RG58, RG59, RG213, RG214, Semi-Rigid & Conformable
Impedance	50, 75 ohms



Radiall

Souriau-Sunbank

by **E.T.N**

Souriau design and manufacture connectors for a broad array of industries. Key markets include instrumentation and measure, special vehicles, machines and machine tools, robotics and industrial automation, renewable energies, lighting, aerospace and defence and navy.

Souriau provides the products required by design engineers that meet the latest application challenges.

Northern Connectors have represented Souriau in the UK for over 30 years and are now the key supplier boasting the largest stock of Industrial product and with VAD rights on the UTS and UTO range of connectors are able to assemble the majority of these two connector ranges in high volume in 2-3 days.

UTP

No. of Contacts	3-48
Locking Mechanism	Bayonet
Termination	Crimp, Solder Cup, Dip Solder
Wire Gauge Max.	2.5mm ²
Cable Diameter Range	3-31mm
Voltage	UL, CSA, IEC Ratings Available on Request
Current	UL, CSA, IEC Ratings Available on Request
Ingress Protection	IP44, IP65



UTG

No. of Contacts	3-48
Locking Mechanism	Bayonet
Termination	Crimp, Solder Cup, Dip Solder
Wire Gauge Max.	2.5mm ²
Cable Diameter Range	3-31mm
Voltage	UL, CSA, IEC Ratings Available on Request
Current	UL, CSA, IEC Ratings Available on Request
Ingress Protection	IP44, IP65



UTO

No. of Contacts	3-48
Locking Mechanism	Bayonet
Termination	Crimp, Solder Cup, Dip Solder
Wire Gauge Max.	2.5mm ²
Cable Diameter Range	3-30mm
Voltage	UL, CSA, IEC Ratings Available on Request
Current	UL, CSA, IEC Ratings Available on Request
Ingress Protection	IP67, IP68, IP69K



UTOW

No. of Contacts	6-61
Locking Mechanism	Bayonet
Termination	Crimp, Dip Solder
Wire Gauge Max.	1mm ²
Cable Diameter Range	3-30mm
Voltage	UL, CSA, IEC Ratings Available on Request
Current	UL, CSA, IEC Ratings Available on Request
Ingress Protection	IP67, IP68, IP69K



UTS

No. of Contacts	3-32
Locking Mechanism	Bayonet
Termination	Crimp, Solder Cup, Dip Solder
Wire Gauge Max.	2.5mm ²
Cable Diameter Range	1.5-18mm
Voltage	UL, CSA, IEC Ratings Available on Request
Current	UL, CSA, IEC Ratings Available on Request
Ingress Protection	IP68, IP69K



UTS Hi-Seal

No. of Contacts	2-19
Locking Mechanism	Bayonet
Termination	Solder Cup, Dip Solder
Wire Gauge Max.	2.08mm ²
Cable Diameter Range	1.5-14mm
Voltage	UL, CSA, IEC Ratings Available on Request
Current	UL, CSA, IEC Ratings Available on Request
Ingress Protection	IP68, IP69K, <i>in both mated and unmated state</i>



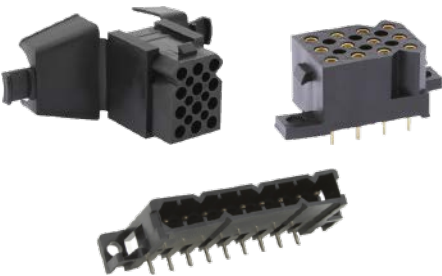
UTL

No. of Contacts	4 & 6
Locking Mechanism	Latch
Termination	Crimp, Solder Cup, Dip Solder
Wire Gauge Max.	2.5mm ²
Cable Diameter Range	NA
Voltage	UL, CSA, IEC Ratings Available on Request
Current	UL, CSA, IEC Ratings Available on Request
Ingress Protection	IP67, IP68, IP69K



SMS

No. of Contacts	2-36
Locking Mechanism	Latch
Termination	Crimp, Solder Cup, Dip Solder
Wire Gauge Max.	2.5mm ²
Cable Diameter Range	0.5-24.5mm
Voltage	UL, CSA, IEC Ratings Available on Request
Current	UL, CSA, IEC Ratings Available on Request
Ingress Protection	IP40



Souriau-Sunbank
by Eaton

Weidmüller

Weidmüller is the leading manufacturer of components for electrical and electronic interconnection technologies. The company develops, produces and sells customer-oriented solutions comprising the entire Weidmüller product portfolio.

The Weidmüller product portfolio ranges from terminal blocks, PCB connectors and terminals, protected components, Industrial Ethernet components and relay sockets to power supply and overvoltage protection modules suitable for all applications. Electrical installation and marking solutions, basic I/O components and a variety of tools round off the range.

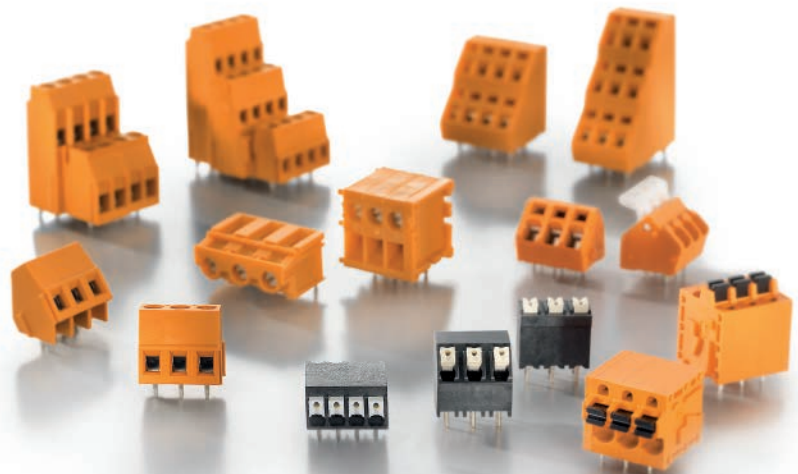
OMNIMATE® Signal PCB Terminals

The economical, direct device connection for industrial electronics.

A reliable device connection is an absolute must for your customised applications. Thanks to OMNIMATE® Signal, we can now offer you the appropriate connection technology to meet your exact requirements.

The economical, direct PCB connection for industrial electronics:

- Application oriented connection technologies from clamping-yoke screw connections to PUSH IN spring cage connections in all relevant cross-sectional areas.
- Universal use in all standard pitch sizes from 3.50mm.
- A wide product range of reflow suitable products for automated SMT processes.
- Compact and multi-layer designs with up to 72 poles.



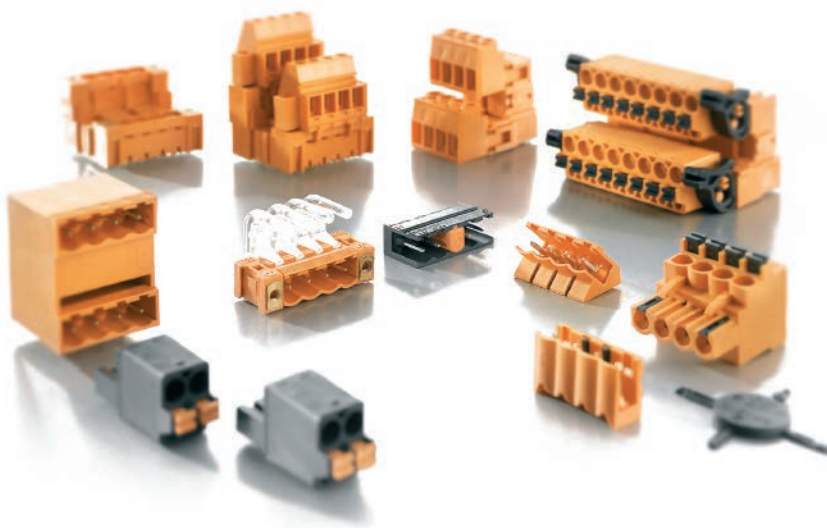
OMNIMATE® Signal PCB Connectors

The service friendly PCB connector for the industry automation.

A reliable device connection is an absolute must for your customised applications. Thanks to OMNIMATE® Signal, we can now offer you the appropriate connection technology to meet your exact requirements.

The wide product range, with its many product series, provides higher design flexibility, efficient processing, and safe, intuitive handling:

- 36 connections at 3.50mm pitch, highest power reserves with 3.81mm pitch and the largest application area in 5.08mm pitch.
- Application oriented connections from clamping-yoke screw connections to PUSH IN spring cage connections.
- A wide product range of reflow suitable products for automated SMT processes.
- Multi-row and multi-layer designs with up to 48 poles.





Northern Connectors Ltd.

Norcon House, Abbotsfield Road
St. Helens WA9 4HU

—

T +44 (0)1744 815001

E sales@northern-connectors.co.uk

—

www.northern-connectors.co.uk