

CONNECTORS FOR THE FOOD & BEVERAGE INDUSTRY





OVERVIEW

The food and beverage industry is renowned for its exceptionally stringent hygiene requirements, which have to be met for machinery and systems, as well as the components they utilise.

Northern Connectors provides support to customers in the food and beverage sector in meeting these standards by supplying a wide range of high-quality connectors and wiring systems. These products allow both manufacturers and producers to work efficiently, while adhering to the requirements expected by both regulators and consumers.

The use of high-quality materials such as stainless steel and special plastics is particularly important for connectors used in the food and beverage industry. In addition, because machinery utilised in this sector is often cleaned with strong chemicals, connectors used must be resistant to these where possible.

We offer a wide selection of connectors that meet these criteria, which have been manufactured and tested to the highest standards. These include widely-used products from leading manufacturers, including:



Our extensive product catalogue is designed to meet the needs of food and beverage businesses, and we are on hand to offer advice on the best products for your unique requirements.



SECTORS AND FIELDS OF APPLICATION

Our connectors are utilised in many industrial food and drink processing applications, including:



Bottling, filling & packaging plants



Breweries



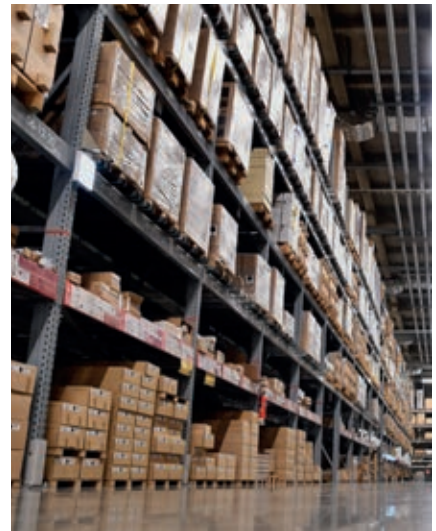
Dairies



Food and beverage factories



Slaughterhouses



Warehouses



OUR CONNECTORS

Northern Connectors supplies a wide selection of durable connectors for food and beverage applications from some of the industry's leading manufacturers. We explore some of these next:

Binder M12 Range

The Binder M12 connector range is designed to fulfil the requirements of the food and beverage industry. All products are both IP69K and Ecolab (ECL) tested. In addition, 1.4404 stainless steel and special plastics are used to ensure corrosion resistance, which means they are ideally suited for packaging, processing and filling applications.

The range comprises of a variety of straight and angled male and female field wireables, panel receptacles with pre-terminated wires and moulded cable connectors with heads made from cream-coloured RAL 9001 polypropylene plastic.

As well as the food & beverage sector, these M12 circular connectors are suitable for use in the pharmaceutical and chemical industries and in other types of industrial food processing, including milk and cheese dairies, abattoirs, bottling plants and food storage. These are all areas where stringent hygiene requirements have to be met for machinery, systems and components.

Features and Specifications:

- No. of Contacts: **3-12**
- Locking Mechanism: **Screw**
- Termination: **Moulded, Screw Clamp**
- Wire Gauge Max.: **0.75mm²**
- Cable Diameter Range: **4-6.5mm**
- Voltage: **60-250V**
- Current: **2-4A**
- Ingress protection: **IP67, IP68, IP69K**



Harting Han® F+B Range

A range of robust Ecolab-certified industrial connectors that are specially designed for the requirements of the food & beverage industry. The hoods, housings and seals of the F+B connector system protect the internal contacts against the water jet from high-pressure cleaners & aggressive cleaning agents.

Hygiene and safety are particularly important in food processing, so machines and equipment must be easy to clean. Circular shapes and smooth junctions, transitions surfaces, threads and seals were chosen for the Han® F+B to ensure a hygienic, easy-to-clean design and to make it harder for dirt and bacteria to accumulate.

Coupling and uncoupling is fast and easy with the specially designed housing profile, which enables secure handling, even in humid environments.

If machine downtime occurs, users no longer need to open a cable gland on the control cabinet to decouple devices. As a result, costly detaching and re-establishing of hardwired connections is eliminated and machine downtimes are greatly reduced.

Features and Specifications:

- No. of Contacts: **2-21**
- Locking Mechanism: **Screw**
- Termination: **Crimp, Screw, Quick-Lock, Axial Screw**
- Wire Gauge Max.: **10mm²**
- Cable Diameter Range: **12-18mm**
- Voltage: **50-400V**
- Current: **6.5-40A**
- Ingress protection: **IP67, IP69K**



Hummel Hygienic Design Stainless Steel Cable Glands

Hummel Hygienic Cable Glands are used in specifications where deposits of bacteria and microorganisms need to be prevented. This range is specifically designed for use in applications where high standards for hygiene and cleaning are required.

The Hygienic design range has major advantages over regular types which are the industry norm. Hummel cable glands are characterized by an extremely high strain-relief, provide a 360° connection of the cable shielding and protecting the sealing insert from twisting during assembly.



Features and Specifications:

- Housing Material: **1.4404 / AISI 316 L Stainless**
- Temperature Rating: **-40°C to +120°C**
- Sealing Material: **VMQ (Silicone)**
- Thread Types: **Metric**
- Cable Diameter Range: **3.5-21mm**
- Ingress protection: **IP66, IP68, IP69K**

Hummel M16 & M23 Stainless Steel Connector Housings

A range of stainless steel housings to be used in conjunction with Hummel M16 Signal, M23 Signal and M23 Power inserts.

Hummel's stainless steel housings are designed to be used in place of the standard options with Nickel Plated surfaces for clean or dangerous environments such as the food and nuclear industries.



Features and Specifications:

- No. of Contacts: **3-19**
- Locking Mechanism: **Screw**
- Termination: **Crimp, Solder Cup, Dip Solder**
- Wire Gauge Max.: **4mm²**
- Cable Diameter Range: **3-17mm**
- Voltage: **24-630V**
- Current: **3-28A**
- Ingress protection: **IP67, IP69K**



Lumberg Automation M8 and M12 Washdown Connectors

Lumberg Automation wash-down connectors are simple and easy to install, saving both time and costs. For maximum flexibility, these M8 and M12 versions are available as straight and right angle connectors. The series is also extremely versatile, comprising various numbers of poles and cable lengths.

This range is specially designed to increase productivity and reliability when exposed to extreme temperatures and excessive mechanical stress caused by high-pressure cleaning.

The wash-down connectors have been developed for use in the food and beverage sector and in the chemical and pharmaceutical industry. They can be used in bottling plants either for bottling and packaging or bottle cleaning applications since they provide a high standard of hygiene. This is particularly relevant when reconfiguring production lines. Components need to be suitable for dismantling and reassembly plus be able to withstand cleaning agents.

Features and Specifications:

- No. of Contacts: **3-8**
- Locking Mechanism: **Screw**
- Termination: **Moulded**
- Voltage: **30-230V**
- Current: **2-4A**
- Ingress protection: **IP67, IP68, IP69K**
- Stainless steel threaded joint (V4A)
- -40°C to +105°C operating temperature (in compliance with the VDE standard)
- Certification according to UL and ECOLAB





CONTACT US

Northern Connectors can assist you with finding the ideal solution for your food & beverage application. Contact us by calling [01744 815 001](tel:01744.815.001), or complete the [online enquiry form](#) on our website and we will contact you at a convenient time.

Northern Connectors

Norcon House
Abbotsfield Road
St. Helens
WA9 4HU
United Kingdom

Tel: [01744 815 001](tel:01744.815.001)

www.northern-connectors.co.uk

