

■ M12 | ■ M12 POWER

Lead Trough for
Control Cabinets

713, 814, 824, 813, 823 Series



M12-A, -S, -K, -T, -L

Series	<p>■ 713</p> <p>■ 814, 824, 813, 823</p>
Contacts	<p>■ 4, 5, 8</p> <p>■ 2+PE, 3+PE, 4+PE, 4, 4+FE</p>
Rated current	<p>■ 4 A</p> <p>■ 12 A, 16 A</p>
Rated voltage	<p>■ 250 V (4-pole), 60 V (5-pole), 30 V (8-pole)</p> <p>■ 630 V (S-/K-Coding), 63 V (T-/L-Coding)</p>
Degree of protection	IP67 in mated condition
Contact plating	Au (gold)



713, 814, 824, 813, 823 Series · Lead Trough for Control Cabinets

- Introduction of the lead through for control cabinets in the new design
- Enables the connection of signal, data and supply cables
- M12 screw and M16 fixing thread
- Flexible installation
- Designed for operating temperatures from – 40 °C to + 85 °C
- Available from now on



Description

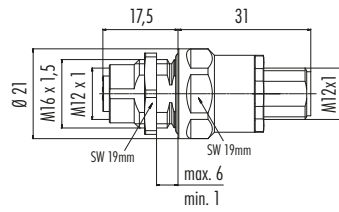
Drawing

Contacts

Fixing thread

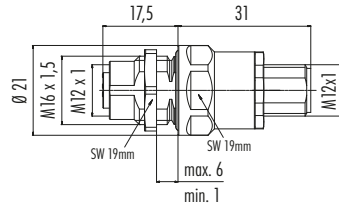
Ordering-No.

M12-A
Adapter lead-through for control cabinet,
female connector M12 x 1 –
male connector M12 x 1,
shielded



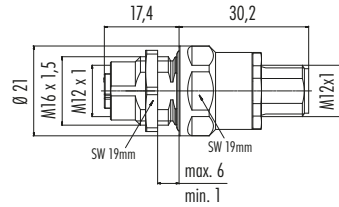
4		09 5240 10 04
5	M16 x 1,5	09 5241 10 05
8		09 5244 10 08

M12-S
Adapter lead-through for control cabinet,
female connector M12 x 1 –
male connector M12 x 1,
shielded



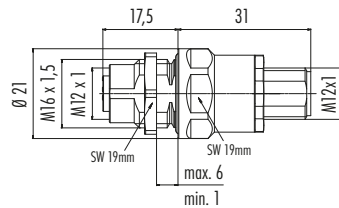
2+PE		09 5270 10 03
3+PE	M16 x 1,5	09 5271 10 04

M12-K
Adapter lead-through for control cabinet,
female connector M12 x 1 –
male connector M12 x 1,
shielded



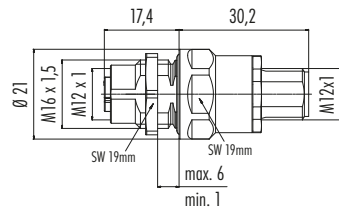
4+PE	M16 x 1,5	09 5290 10 05
------	-----------	---------------

M12-T
Adapter lead-through for control cabinet,
female connector M12 x 1 –
male connector M12 x 1,
shielded



4	M16 x 1,5	09 5260 10 04
---	-----------	---------------

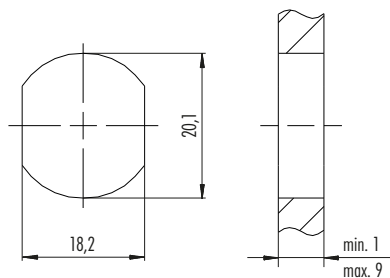
M12-L
Adapter lead-through for control cabinet,
female connector M12 x 1 –
male connector M12 x 1,
shielded



4+FE	M16 x 1,5	09 5291 10 05
------	-----------	---------------

Panel cut out

Lead-through for control cabinet with bore hole



Tightening torque
3 Nm

